



## Reminder Lane, SE10

£325,000

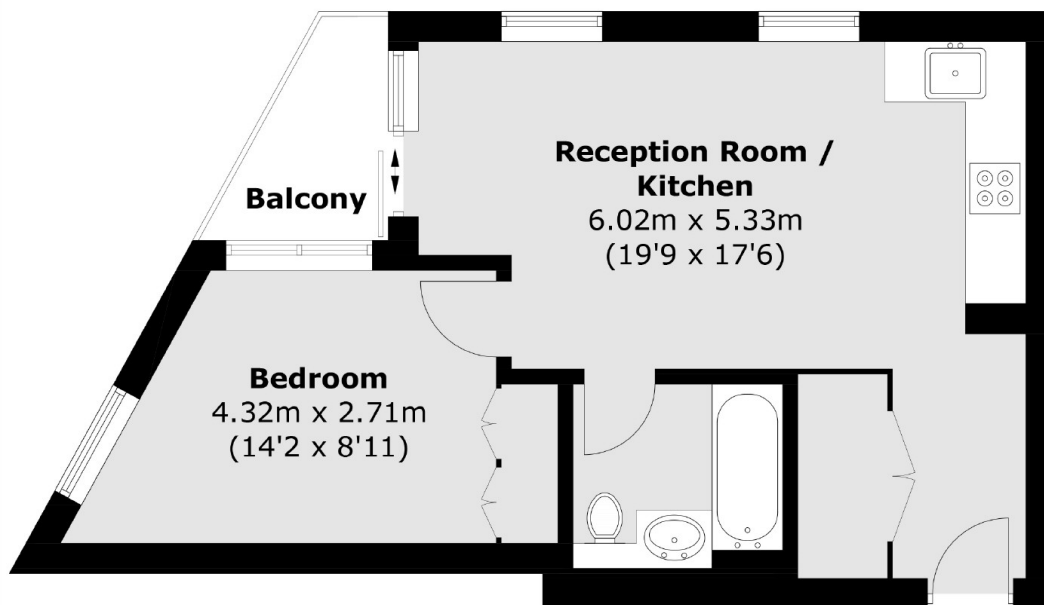
An amazing one bedroom apartment situated in this prestigious building, the property comprises of an open plan kitchen/dining/lounge, one double bedroom and a bathroom off the hallway.

Greenwich Peninsula is a modern community that has been designed with the residents in mind offering a range of amenities, which include North Greenwich Station for direct connections to Canary Wharf, London Bridge and The West End. The O2 arena which offers an array of bars and restaurants to enjoy as well as a cinema and retail outlet centre.

### Features

- One Bedroom
- Ideal First Purchase
- Private Balcony
- Sought After Location
- Modern
- Chain Free

# Reminder Lane, London, SE10



Total area (approx.): 39.4 sq. m (424.1 sq. ft)  
Balcony: 2.8 sq. m (30.1 sq. ft)