



West Parkside, SE10

£675,000

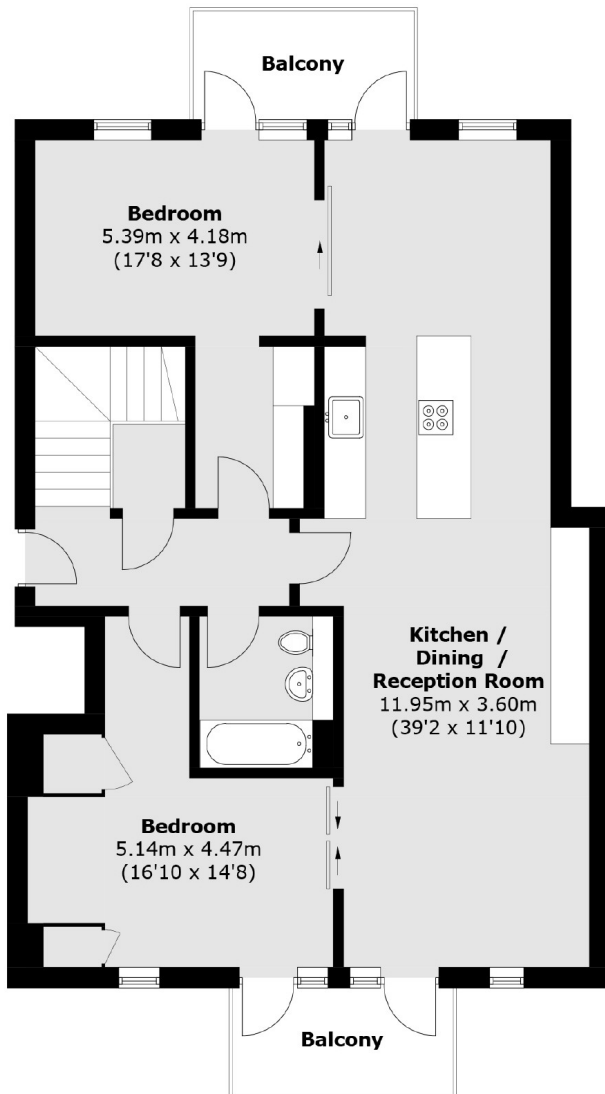
A four bedroom split level modern flat in a sought after location which benefits from two bathrooms and four balconies with great city views! The property has been finished to a high standard and is immaculate throughout.

Located on the Greenwich Peninsula providing easy access to North Greenwich Tube Station which provides swift access to Canary Wharf, London Bridge and the West End via the Jubilee Line while the Thames Clipper provides an alternative way to commute. Nearby the O2 Arena offers an array of shops, restaurants, bars and a cinema for local residents to enjoy. The property is currently in the catchment area for the very popular Millennium Primary School.

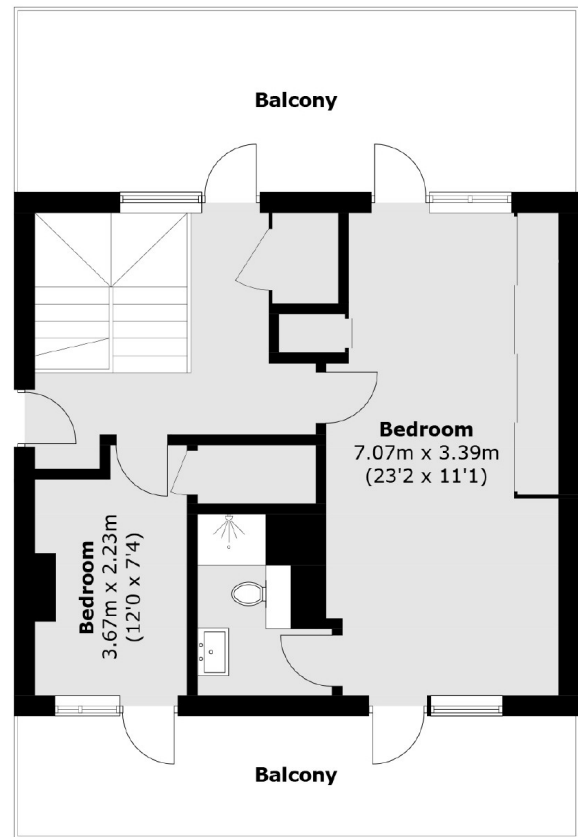
Features

- Split Level
- Fifth & sixth Floor
- Four Bedrooms
- Two Designated Parking Spaces
- City Views
- Sought After Location

West Parkside, London, SE10



Fifth Floor



Sixth Floor

Total area (approx.): 148.9 sq. m (1,602.8 sq. ft)
Balcony: 46.2 sq. m (497.3 sq. ft)