



Cable Walk, SE10

£577 Per week

Perfectly presented two bedroom two bathroom apartment situated on the sixth floor in the popular Enderby Wharf riverside development. Features open plan living space with hardwood flooring, private balcony, two double bedrooms and ample storage.

Residents have the benefit of a 24-hour on site concierge and a residents-only gym, spanning two floors with a full suite of gym equipment.

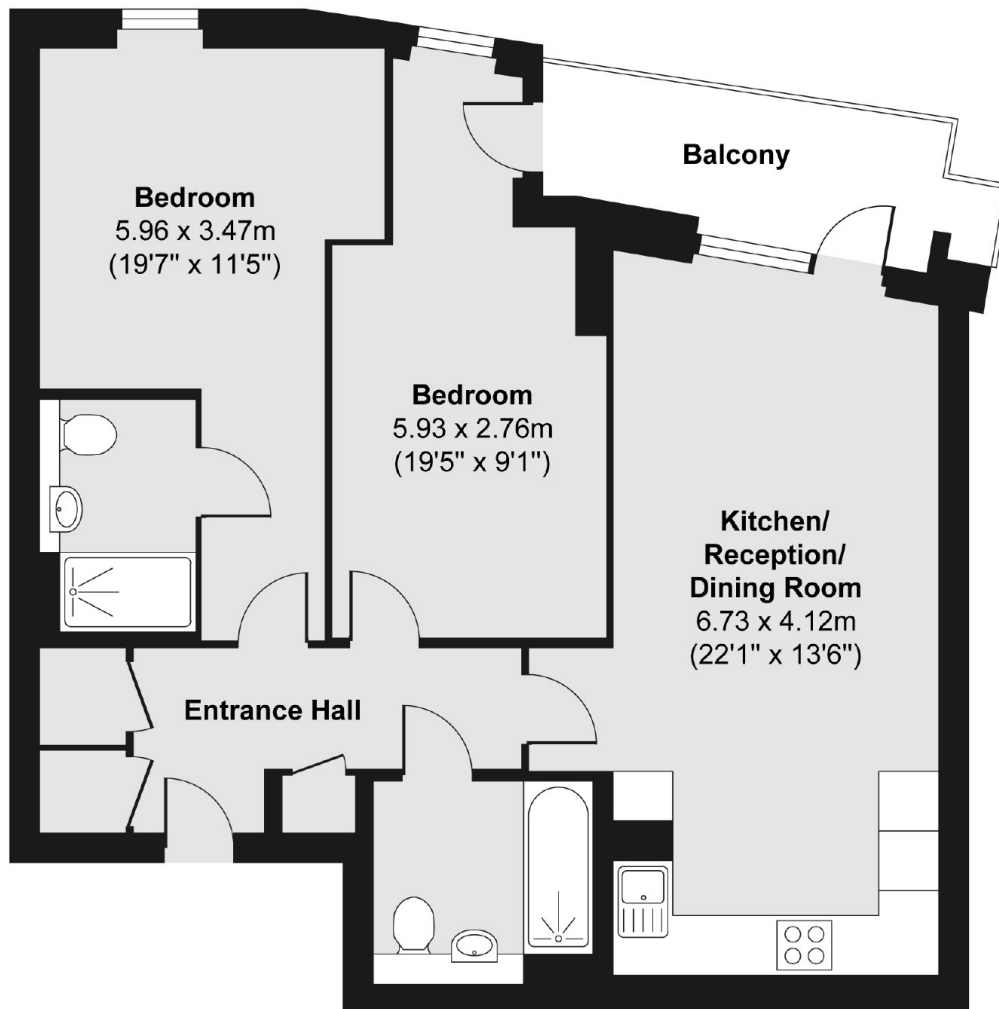
Located in the Royal Borough of Greenwich, this river development benefits from being near to the thriving mix of shops and cafés based around the beautiful Royal Park as well as the intense regeneration of nearby Greenwich Peninsula. This will provide a vast range of leisure, retail and restaurant facilities just a short walk away, along the

Features

- Two Bedrooms
- Two Bathrooms
- Open Plan Living
- Secure Development
- Private Balcony
- On Site Gym and Concierge

Cable Walk, London, SE10

Sixth Floor



Total area (approx.) 70.80 sq. m (762 sq. ft)

Balcony area (approx.) 6.25 sq. m (67 sq. ft)