



Azof Street, SE10

£775,000

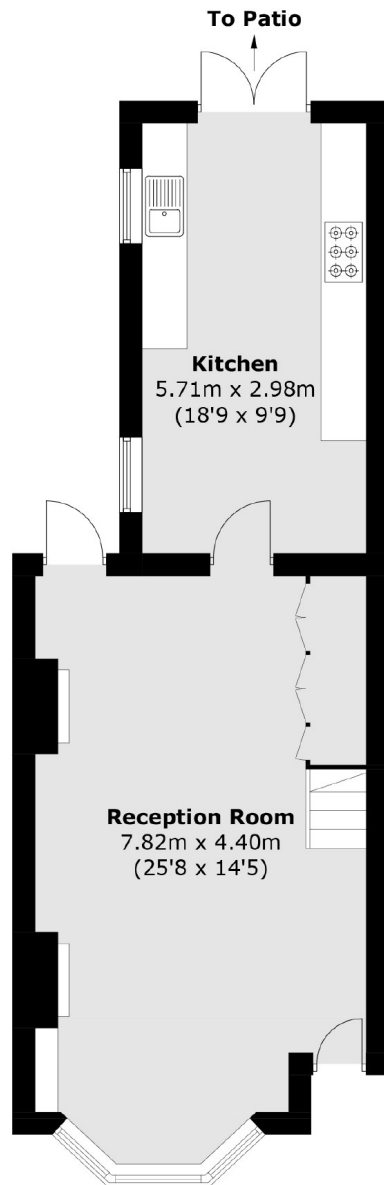
A beautifully presented three double bedroom period family home in a sought after location which has been finished to a great standard and benefits from the potential to extend STPP. A viewing is highly recommended.

Azof street is a quiet residential street located a short walk from Maze Hill Mainline Station providing direct links to London Bridge, Cannon Street and St Pancras. North Greenwich (Jubilee Line), Cutty Sark (DLR) and Greenwich Pier (Uber Boats) are also nearby. The Thames Path is very close and Greenwich Park, National Maritime Museum, Royal Observatory, Royal Naval College and the O2 are located nearby. There are an array of local shops, restaurants and cafés along Trafalgar Road and the river path for residents to enjoy while larger supermarkets are also within easy reach. A number of popular nurseries and schools for families are also in the local vicinity.

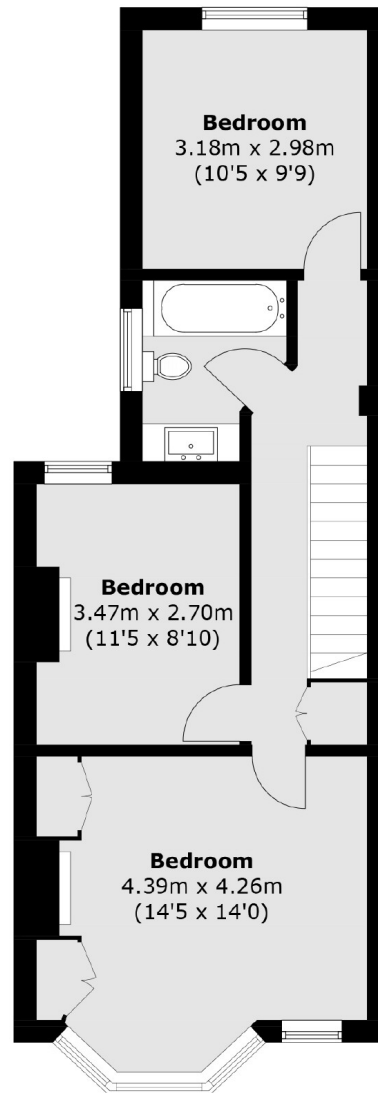
Features

- Freehold
- Potential To Extend STPP
- Period Family Home
- Sought After Location
- Three Double Bedrooms
- Four Original Fireplaces

Azof Street,
London, SE10



Ground Floor



First Floor

Total area (approx.): 100.8 sq. m (1,084.9 sq. ft)