



Ballast Quay, SE10
£800,000

Dexters



Ballast Quay, SE10

Gracefully positioned along the tranquil banks of the River Thames, this remarkable Georgian residence which is a two bedroom double fronted family home that is a quintessential example of period elegance. Rich in original features the home radiates timeless charm and character. Situated in the highly desirable Greenwich area, just a short stroll from the iconic Cutty Sark, it offers a rare blend of historic grandeur and riverside serenity.

This home is further enhanced by a generously sized lawned rear garden and an additional private front garden patio. Residents also enjoy exclusive access to the beautifully maintained private gardens on Ballast Quay, a special retreat right on the doorstep. The first-floor reception room offers exciting potential too, with planning permission already granted for a stunning bay window. Once added, this feature would frame breathtaking views of the river.

Just a short distance from numerous amenities and attractions, Greenwich offers an array of wonderful bars, cafés, restaurants, the famous Greenwich Market, and a variety of independent shops. Excellent transport links include Maze Hill main line station with direct trains to London Bridge, Blackfriars, St Pancras, and Cannon Street, as well as the Cutty Sark DLR providing easy access to Canary Wharf.

Features

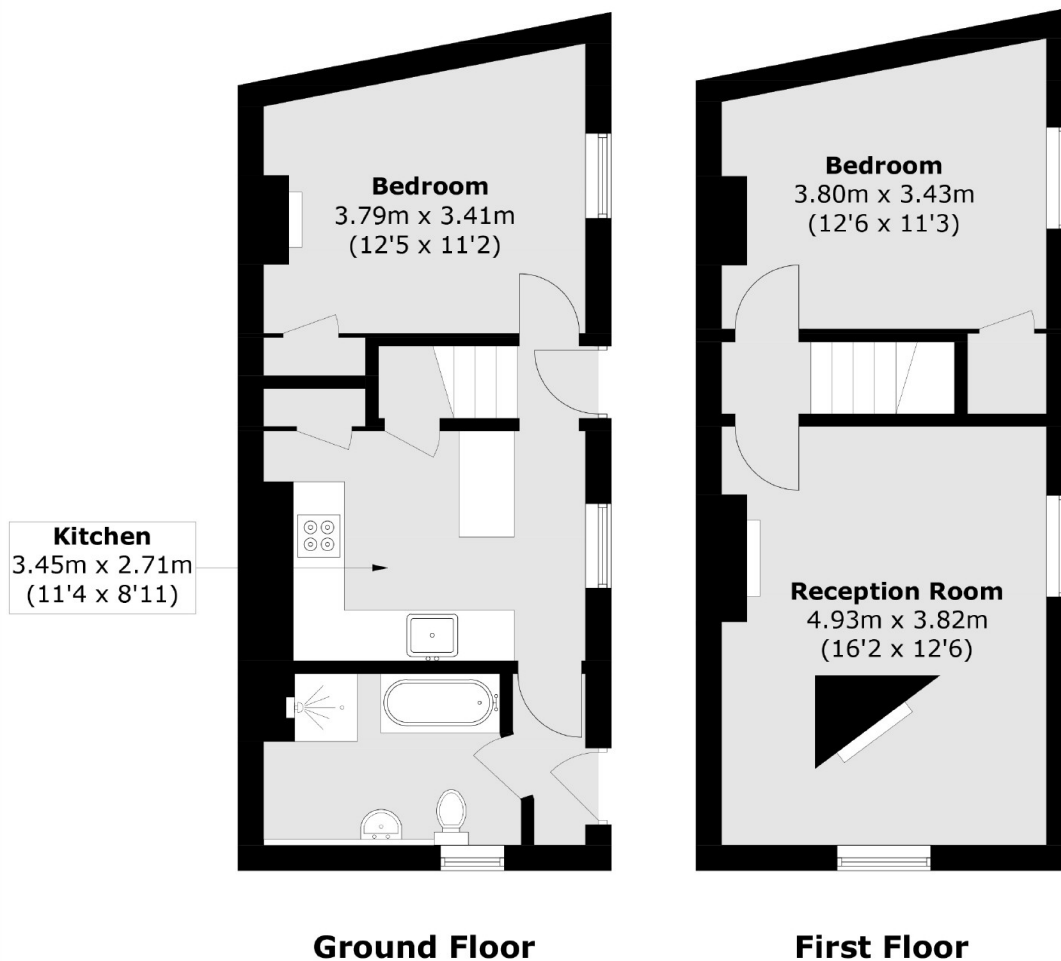
- Period Home
- Chain Free
- Finished To A High Standard
- Freehold
- Sought After Location
- Double Fronted







Ballast Quay, London, SE10



Total area (approx.): 69.6 sq. m (749.2 sq. ft)