



## Lambarde Square, SE10

### £450,000

A stunning apartment in a stylish Greenwich development this exceptional property offers a well-designed living space with a private balcony and beautifully finished interior striking the perfect balance between comfort and convenience. The accommodation features a welcoming entrance hall with built-in storage, leading to a spacious open-plan reception, kitchen, and dining area. Flooded with natural light, The apartment boasts two generously sized double bedrooms and two bathrooms. The master bedroom features two built-in wardrobes.

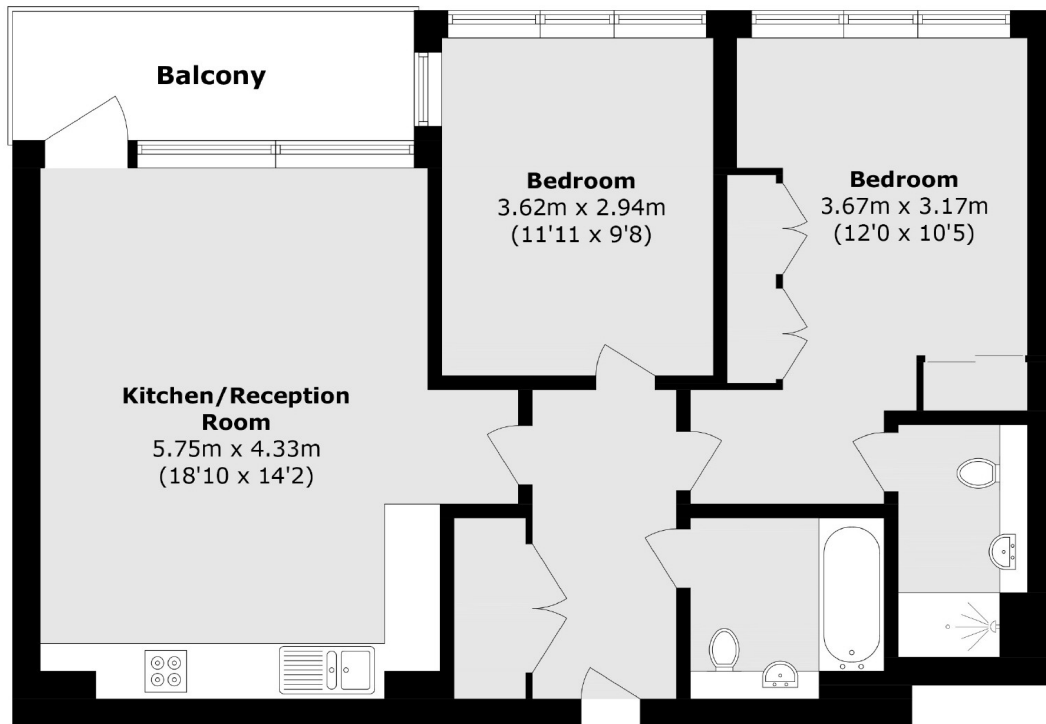
The property boasts an excellent location with convenient access to North Greenwich Underground Station (Jubilee Line), as well as Westcombe Park and Maze Hill stations, offering direct links to London Bridge, Cannon Street, and Thameslink services. The vibrant Greenwich area offers an array of shops, Gyms, trendy bars, cafes, and restaurants, alongside lively markets, the historic Cutty Sark, and the stunning Greenwich Park, home to the Royal Observatory. Additionally, the renowned O2 Arena is nearby, featuring world-class entertainment, concerts, a cinema, and a diverse selection of dining options.

### Features

Two Bedrooms  
Sought-after Location

Two Bathrooms  
Private Balcony  
Close to Transport

# Lambarde Square, London, SE10



Total area (approx.): 69.7 sq. m (750.2 sq. ft)  
Balcony area (approx.): 6 sq. m (64.5 sq. ft)