



## King George Street, SE10

£1,320,000

Set on arguably the best road in West Greenwich, this immaculately presented three bedroom, two bathroom family home offers the perfect blend of period charm and modern living. With no work required, this turn-key property is ideal for families seeking space, style, and convenience in one of the area's most desirable locations.

Located on one of West Greenwich's most sought after roads and is within moments of Greenwich Royal Park and Greenwich mainline and DLR station providing easy access to Canary Wharf, the City and beyond. Royal Hill with its eclectic mix of independent shops, cafes, restaurants and pubs is a short stroll around the corner.

### Features

- Chain Free
- Prime Location
- Private Garage
- South Facing Garden
- Downstairs W.C
- Three Bedrooms



## King George Street, SE10

From the moment you approach the elegant brick facade, it's clear this home has been lovingly maintained and thoughtfully updated. Step inside to find a bright and spacious interior, featuring a generous reception room with large windows, rich wood flooring, and a seamless flow into the heart of the home.

The contemporary kitchen is a real highlight, boasting sleek white cabinetry, striking blue splashbacks, integrated appliances, and a dedicated dining area perfect for everyday living or entertaining guests.

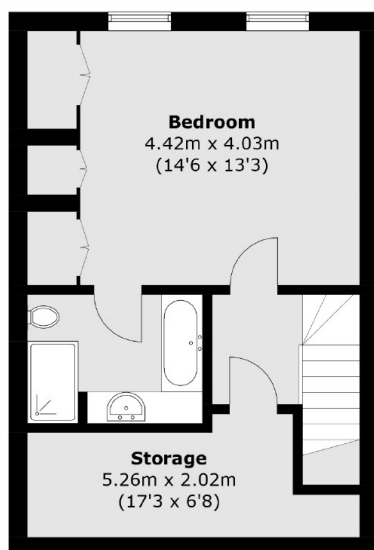
Upstairs, three well-proportioned bedrooms provide ample space for family life, work-from-home setups, or guests. Two modern bathrooms, including a stylish main family bathroom and an additional shower room, ensure convenience and comfort for all.

To the rear, a beautifully paved south-facing garden. Completing the package is a private garage, a rare and highly sought-after feature in the area.

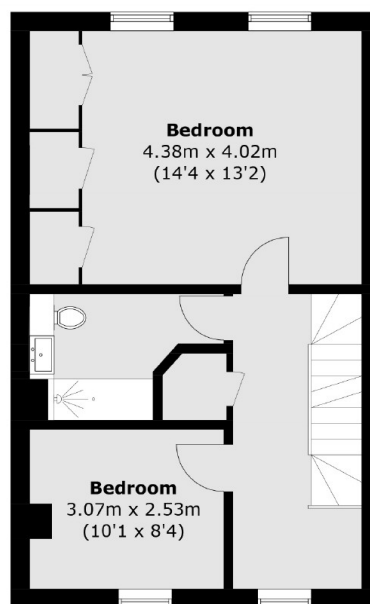




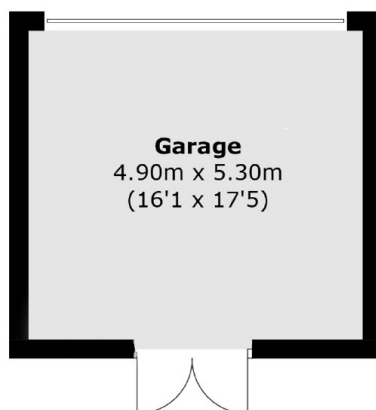
King George Street,  
London, SE10



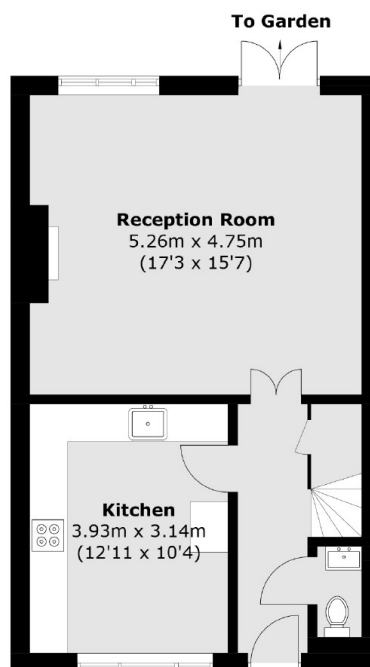
**Second Floor**



**First Floor**



**Lower Ground Floor**



**Ground Floor**

Total area (approx.): 161.4 sq. m (1,737.2 sq. ft)  
(Including Garage)

**Dexters**

Greenwich  
275 Greenwich High Road  
Greenwich  
London  
Sales  
020 8815 2215

Energy Rating: C. We aim to make our particulars both accurate and reliable. However they are not guaranteed; nor do they form part of an offer or contract. If you require clarification on any points then please contact us, especially if you're traveling some distance to view. Please note that appliances and heating systems have not been tested and therefore no warranties can be given as to their good working order.

 **RICS** | Regulated  
Estate Agent  
and Letting Agent

[dexters.co.uk](http://dexters.co.uk)