



Pelton Road, SE10

£450,000

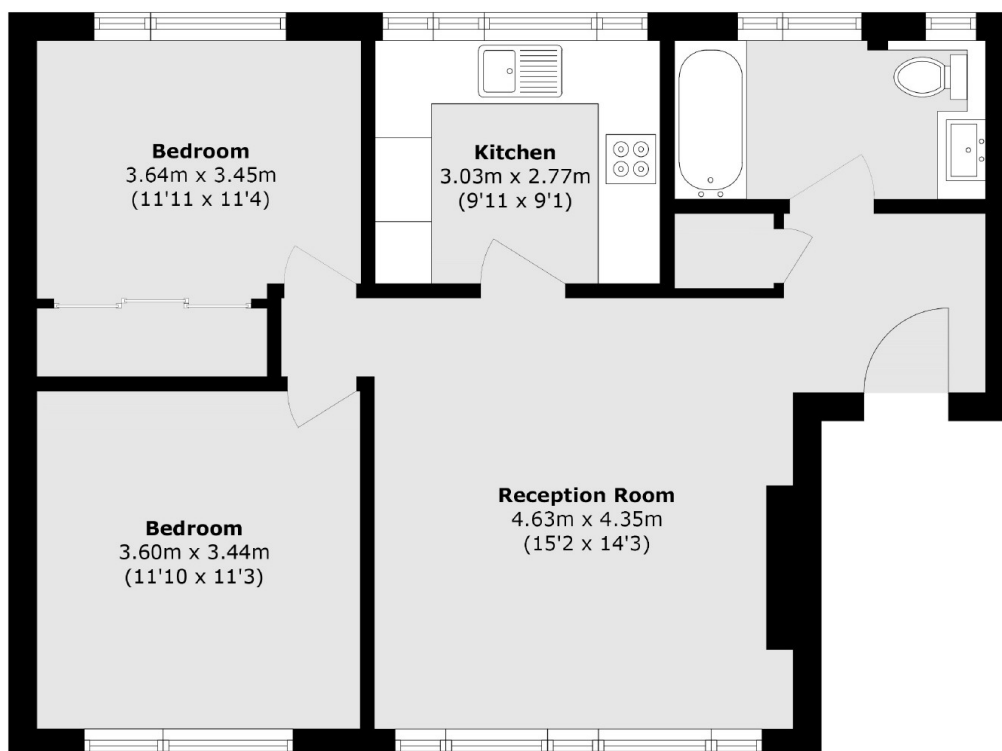
A charming two bedroom flat which has been finished to a great standard, situated in a sought after location and further benefits from maintained communal gardens at the rear.

Pelton Road is a quiet residential street located a short walk from Maze Hill Mainline Station providing direct links to London Bridge, Cannon Street and St Pancras. Greenwich Park is located nearby as are the many historical attractions of Greenwich including the National Maritime Museum, Royal Observatory and the Royal Naval College. There are an array of local shops, restaurants and cafés along Trafalgar Road for residents to enjoy while larger supermarkets are also within easy reach. A number of popular nurseries and schools for families are also in the local vicinity.

Features

Two Bedrooms
No Work Required
Ideal First Purchase
Communal Gardens
Purpose Built Flat
Light & Airy

Pelton Road,
London, SE10



Total area (approx.): 66.6 sq. m (716.8 sq. ft)