



## Tidemill Square, SE10

£625,000

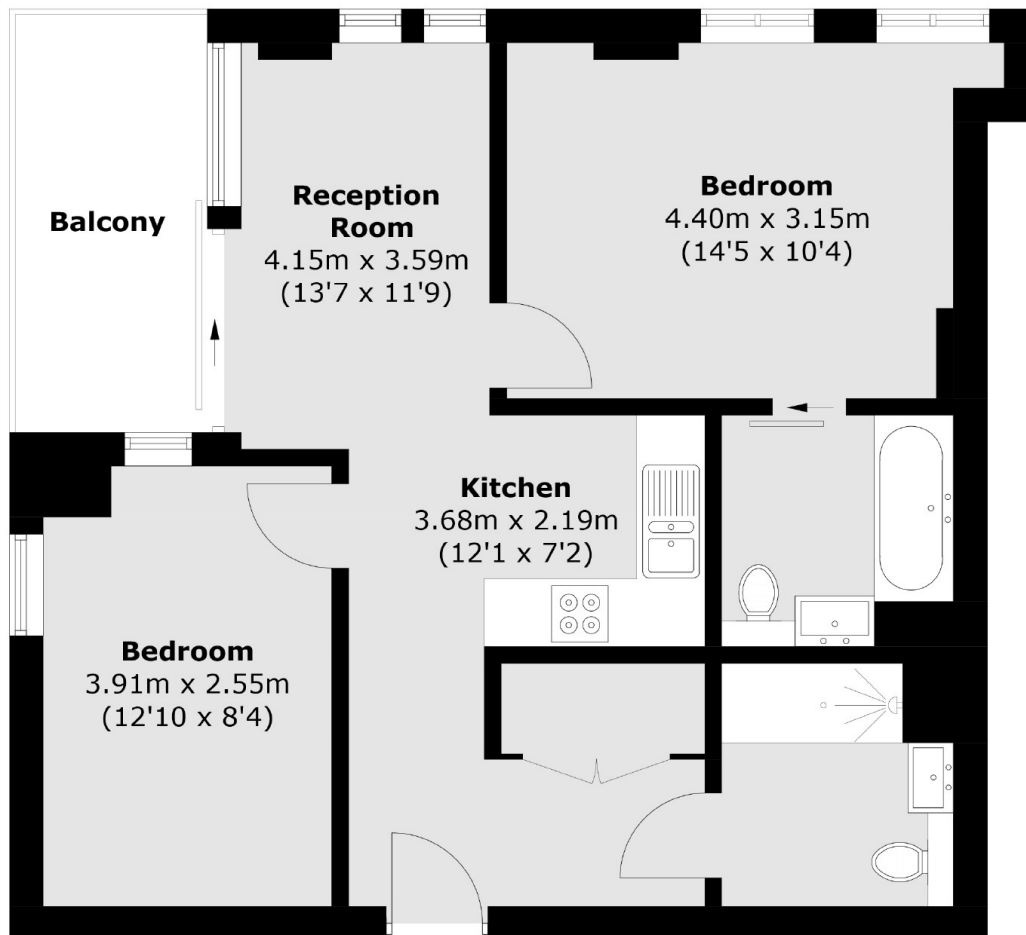
An amazing 16th floor two bedroom, two bathroom apartment situated in this prestigious building overlooking the River Thames, the property comprises of an open plan kitchen/ dining/lounge, two double bedrooms, en-suite to the master bedroom and a second recently refurbished bathroom off the hallway, the property offers panoramic views across the Thames as well as amenities such as a gym, concierge, cinema room and communal roof terrace.

Greenwich Peninsula is a modern community that has been designed with the residents in mind offering a range of amenities, which include North Greenwich Station for direct connections to Canary Wharf, London Bridge and The West End. The O2 arena which offers an array of bars and restaurants to enjoy as well as a cinema and retail outlet centre.

### Features

- Two Bedrooms
- Two Bathrooms
- 16th Floor
- Panoramic Views
- Gym
- Concierge

# Tidemill Square, London, SE10



Total area (approx.): 55.3 sq. m (595.2 sq. ft)  
Balcony (approx.): 6.3 sq. m (67.8 sq. ft)

## Dexters

Greenwich  
275 Greenwich High Road  
Greenwich  
London  
Sales  
020 8815 2215

Energy Rating: B. We aim to make our particulars both accurate and reliable. However they are not guaranteed; nor do they form part of an offer or contract. If you require clarification on any points then please contact us, especially if you're traveling some distance to view. Please note that appliances and heating systems have not been tested and therefore no warranties can be given as to their good working order.

 **RICS** | Regulated  
Estate Agent  
and Letting Agent

[dexters.co.uk](https://www.dexters.co.uk)