



Hawthorne Crescent, SE10

£500,000

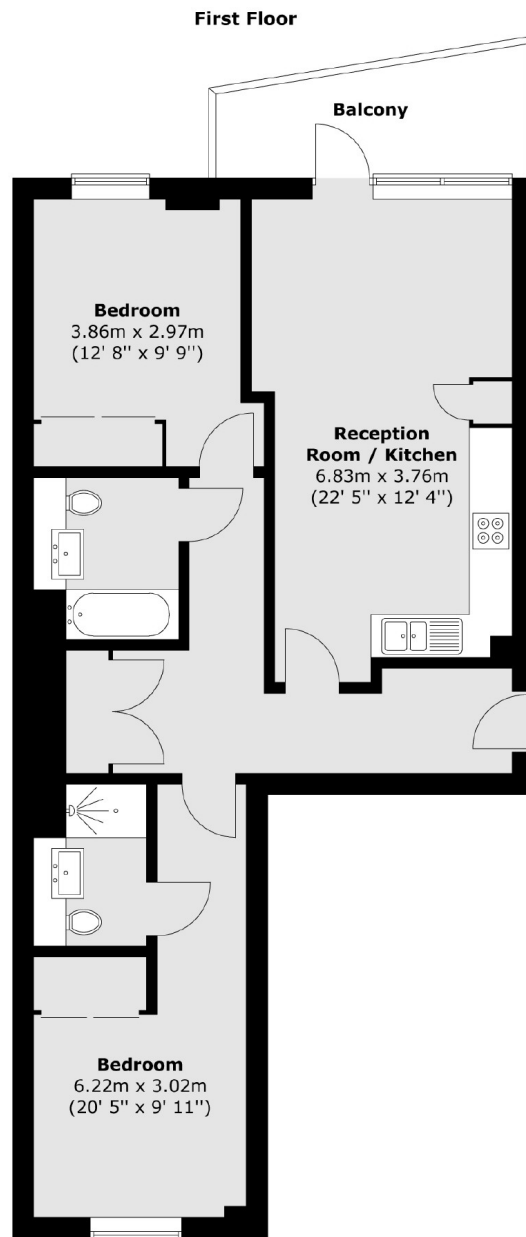
This beautifully presented two-bedroom flat with a private balcony is located just a short walk from Maze Hill Station and Greenwich Park, offering a blend of modern living and convenience. The spacious kitchen features ample dining space, and the property benefits from a quiet and friendly neighbourhood with excellent amenities.

Residents have easy access to the Greenwich Centre, which includes a library, gym with pool, and a GP practice, all just across the road. The flat is well connected with mainline rail services to both Cannon Street and King's Cross, as well as easy access to the DLR and Jubilee Line.

Features

- Two Bedrooms
- Two Bathrooms
- Sought After Location
- Private Balcony
- Communal Gardens
- Ideal First Purchase

Hawthorne Crescent, London, SE10



Total area (approx.) : 75.2 sq. m (809 sq. ft)
Total balcony area (approx.) : 6.9 sq. m (74 sq. ft)