



Guildford Grove, SE10  
£1,200,000

**Dexters**





## Guildford Grove, SE10

A charming two/three double bedroom Victorian semi detached family home, further benefiting from potential to extend STPP. Situated in the Ashburnham Triangle conservation area.

This Brick fronted Victorian semi-detached house circa 1850 has been lovingly looked after and updated throughout. The accommodation is arranged over three storeys, the lower ground floor comprises a great, large kitchen / dining area.

On the ground floor there is a lovely reception room with period features that could be used as a third bedroom. Conveniently next door is the family bathroom.

On the top floor there is two large master bedrooms. To the rear you will find a fully landscaped south facing garden.

Conveniently the conservation area is close to all transport links and amenities. The enviable location of this property makes commuting easy with Greenwich Station and the DLR close by providing links to the City and Canary Wharf. Greenwich village is also within easy reach with an array of shops, restaurants and bars.

### Features

- Chain Free
- Two/Three Bedrooms
- Period Family Home
- Sought After Location
- South Facing Garden
- Ashburnham Triangle





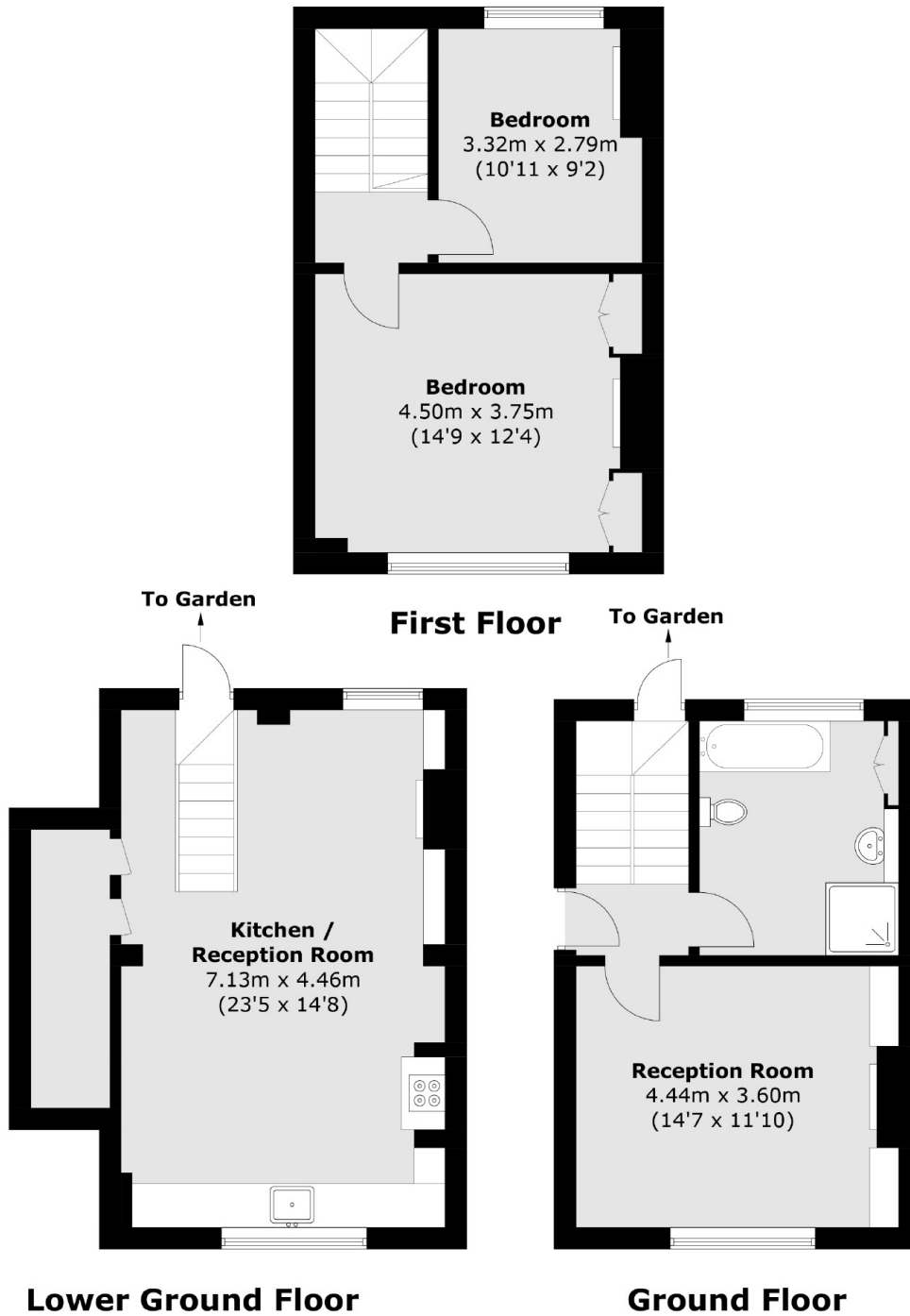








# Guildford Grove, London, SE10



Total area (approx.): 100.4 sq. m (1,080.6 sq. ft)

## Dexters

Greenwich  
275 Greenwich High Road  
Greenwich  
London  
Sales  
020 8815 2215

Energy Rating: D. We aim to make our particulars both accurate and reliable. However they are not guaranteed; nor do they form part of an offer or contract. If you require clarification on any points then please contact us, especially if you're traveling some distance to view. Please note that appliances and heating systems have not been tested and therefore no warranties can be given as to their good working order.

 **RICS** | Regulated  
Estate Agent  
and Letting Agent

[dexters.co.uk](https://www.dexters.co.uk)