



## Victoria Parade, SE10

### £450,000

This well-presented one-bedroom apartment is located in the highly desirable Jubilee Court, within the dynamic and modern New Capital Quay development. Inside, you'll find a bright and spacious living area, the open-plan kitchen comes fully equipped with integrated appliances, ideal for modern living and entertaining. The generously sized bedroom offers plenty of storage space.

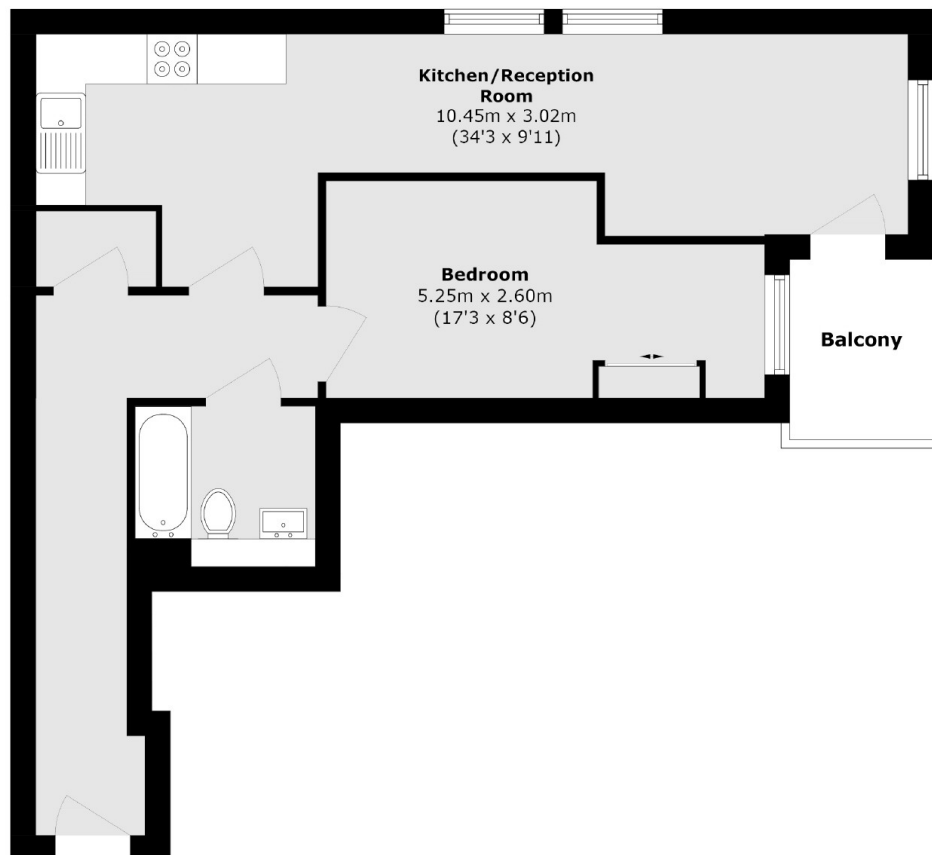
New Capital Quay boasts an excellent location in the heart of Greenwich, with convenient access to a variety of local amenities, including riverside walks, cafés, restaurants, and shops. The area is well-served by transport links, with Cutty Sark DLR and Greenwich mainline station just a short walk away, offering quick connections to Canary Wharf, the City, and beyond. Residents also enjoy the benefits of a 24-hour concierge service.

### Features

- One Bedroom Apartment
- Open Plan Kitchen And Lounge
- Plenty Of Natural Light
- 24 Hour Concierge
- Riverside Development
- Moments From Town Centre

# Victoria Parade, London, SE10

---



Total area (approx.): 52.7 sq. m (567.2 sq. ft)

Balcony area (approx.): 3.7 sq. m (39.8 sq. ft)