



Lindsell Street, SE10

£675,000

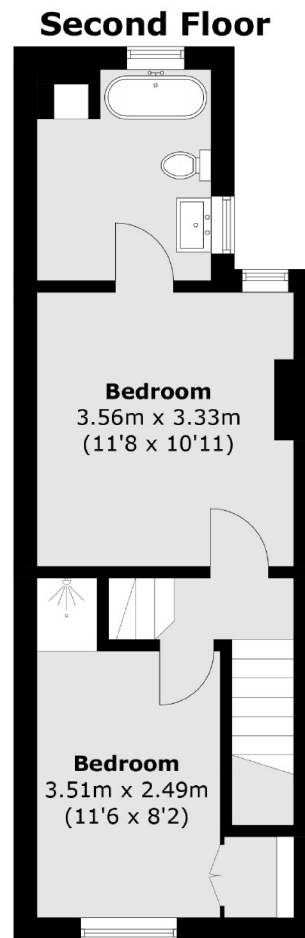
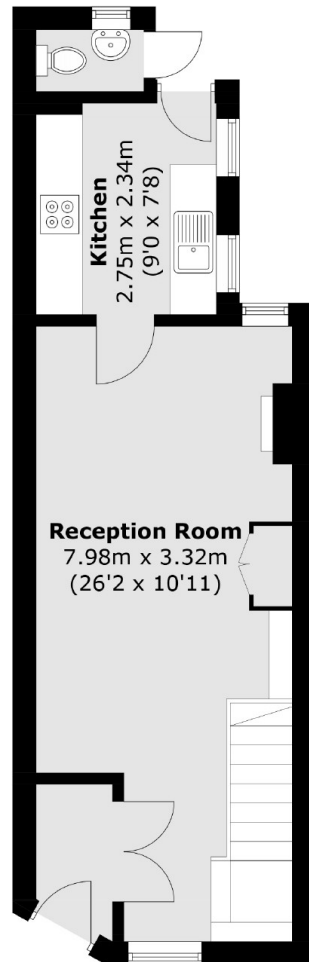
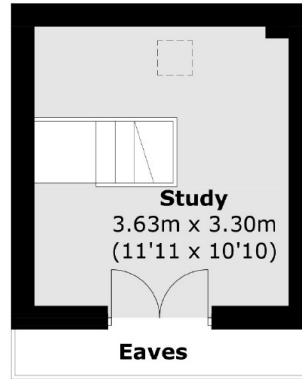
A charming two Victorian cottage in a sought after location which has been finished to a high standard and has period features throughout. Further benefiting from an additional study space and is offered to the market chain free.

Lindsell street is in West Greenwich with mainline rail and DLR services just moments away, as is the town centre which offers a fantastic array of shops, restaurants, markets and museums, along with the delightful Royal Park.

Features

Period Cottage
Finished To A High Standard
Sought After Location
West Greenwich
Two Bedrooms
Downstairs W.C.

Lindsell Street,
London, SE10



Ground Floor

First Floor

Total area (approx.): 79.5 sq. m (851.4 sq. ft)
External Underneath Total Area: 1.1 sq. m (11.8 sq. ft)

Dexters

Greenwich
275 Greenwich High Road
Greenwich
London
Sales
020 8815 2215

Energy Rating: E. We aim to make our particulars both accurate and reliable. However they are not guaranteed; nor do they form part of an offer or contract. If you require clarification on any points then please contact us, especially if you're traveling some distance to view. Please note that appliances and heating systems have not been tested and therefore no warranties can be given as to their good working order.

RICS | Regulated
Estate Agent
and Letting Agent

dexters.co.uk