



Tidemill Square, SE10

£700,000

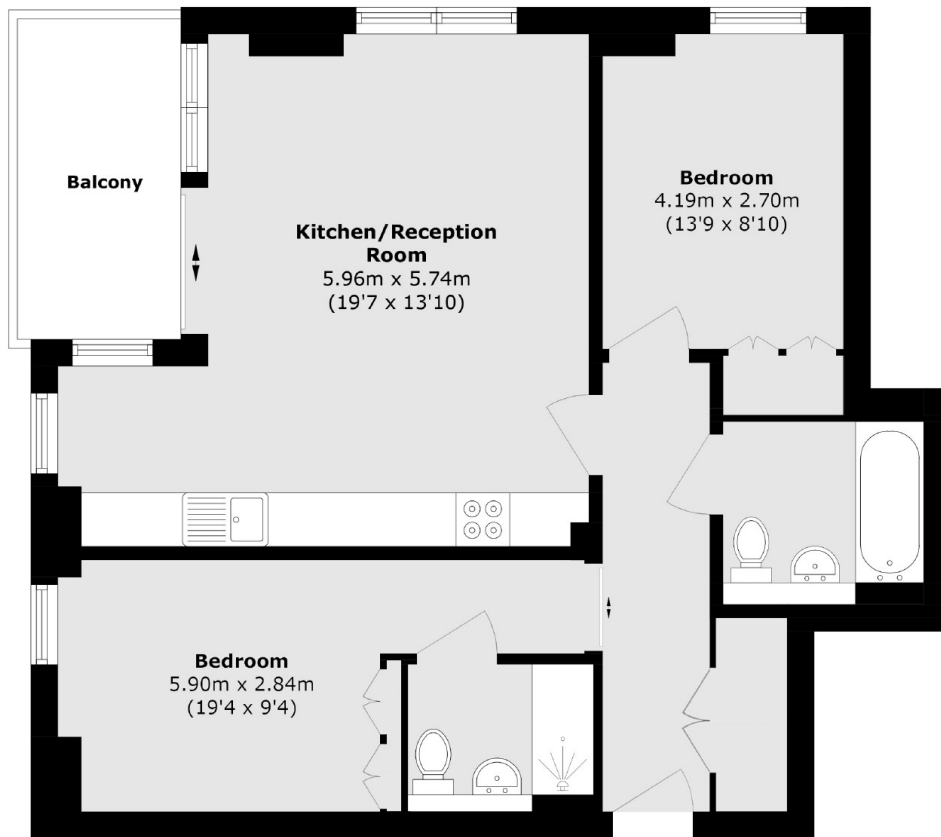
An exceptional two-bedroom apartment located in the highly sought-after Tidemill Square. This stylish property features an open-plan kitchen, dining, and lounge area, two spacious bedrooms, a modern bathroom, and an en-suite. Enjoy stunning panoramic views across the Thames from your private balcony. Additional benefits include full access to the concierge service and gym, as well as secure allocated parking.

Greenwich Peninsula is a modern community that has been designed with the residents in mind offering a range of amenities, which include North Greenwich Station for direct connections to Canary Wharf, London Bridge and The West

Features

- Two Bedrooms
- Private Allocated Parking
- Residents Gym, Cinema & Roof Terrace
- 24 Hour Concierge
- Private Balcony
- River Views

Tidemill Square, London, SE10



Total area (approx.): 70.8 sq. m (801.9 sq. ft)

Balcony area (approx.): 6.5 sq. m (69.9 sq. ft)

Dexters

Greenwich
275 Greenwich High Road
Greenwich
London
Sales
020 8815 2215

Energy Rating: B. We aim to make our particulars both accurate and reliable. However they are not guaranteed; nor do they form part of an offer or contract. If you require clarification on any points then please contact us, especially if you're traveling some distance to view. Please note that appliances and heating systems have not been tested and therefore no warranties can be given as to their good working order.

 **RICS** | Regulated
Estate Agent
and Letting Agent

[dexters.co.uk](https://www.dexters.co.uk)