



Tarves Way, SE10

£350,000

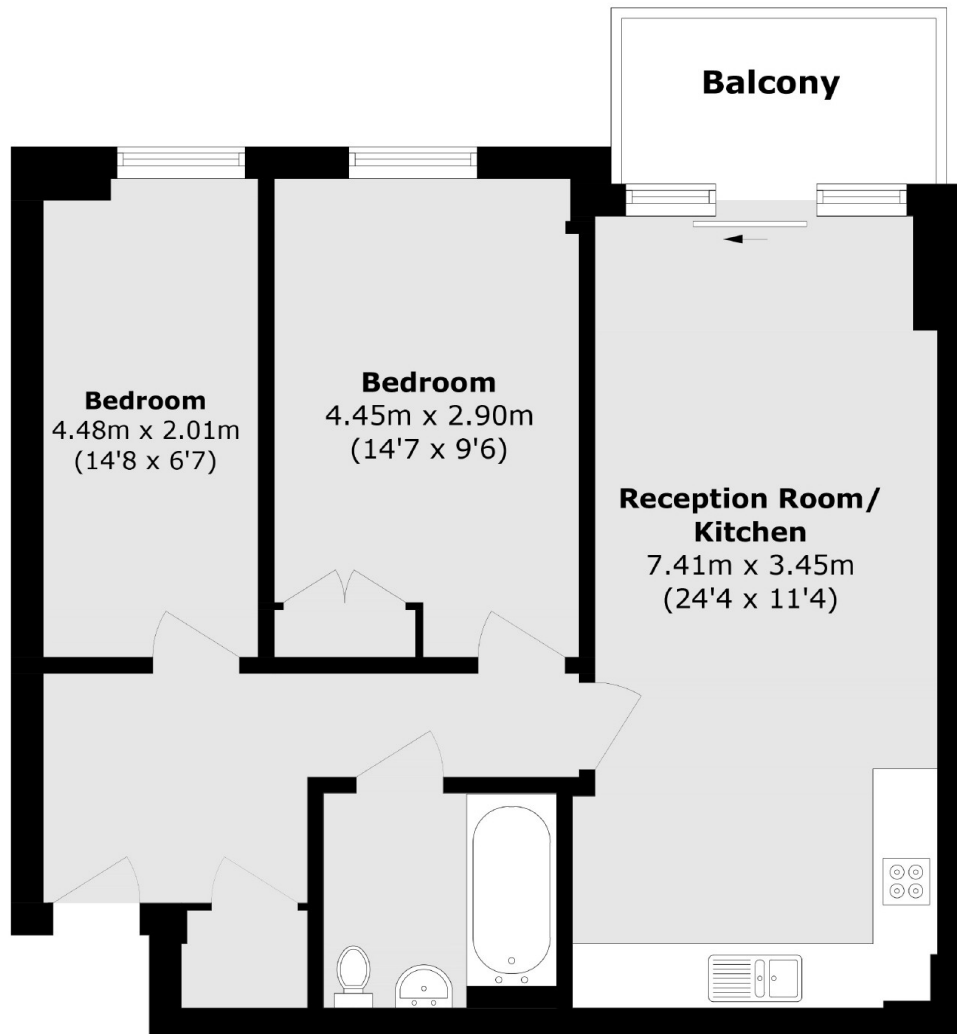
A two double bedroom modern apartment which is situated in a sought after location and benefits private balcony and a private underground parking space.

The property is ideally located for Greenwich village with its array of shops, bars and restaurants, including a Waitrose within close walking distance. Furthermore, the proximity to Greenwich Station and DLR provides fantastic links to Canary Wharf, London Bridge and the City.

Features

Two Bedrooms
Sought After Location
Ideal First Purchase
Private Balcony
Underground Parking Space.

Tarves Way,
London, SE10



Total area (approx.): 62.4 sq. m (671.6 sq. ft)

Balcony area (approx.): 4.5 sq. m (48.4 sq. ft)

Dexters

Greenwich
275 Greenwich High Road
Greenwich
London
Sales
020 8815 2215

Energy Rating: Tbc. We aim to make our particulars both accurate and reliable. However they are not guaranteed; nor do they form part of an offer or contract. If you require clarification on any points then please contact us, especially if you're traveling some distance to view. Please note that appliances and heating systems have not been tested and therefore no warranties can be given as to their good working order.

 **RICS** | Regulated
Estate Agent
and Letting Agent

[dexters.co.uk](https://www.dexters.co.uk)