



Blackheath Hill, SE10

£300,000

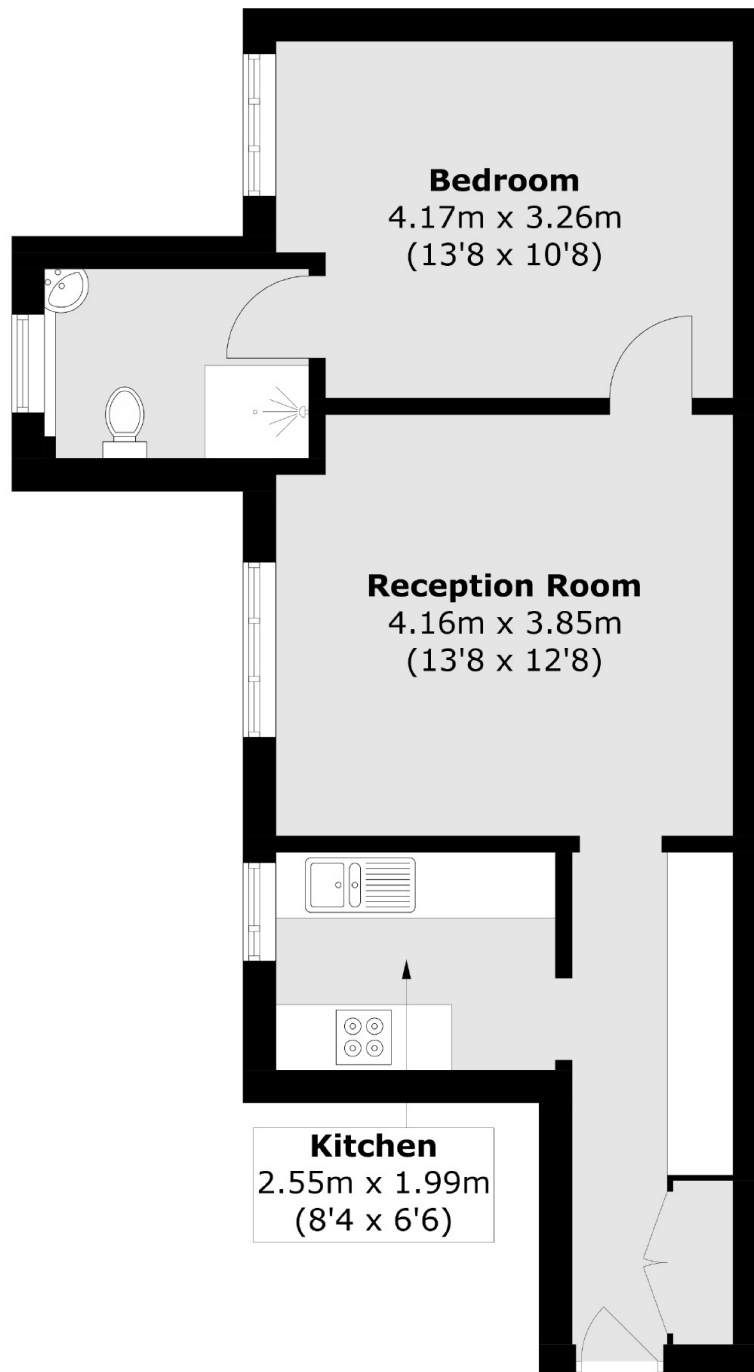
A charming one bedroom ground floor purpose built flat in a sought after location which would make an ideal first purchase.

Blackheath Hill offers a quick commute to Canary Wharf, London Bridge, Cannon Street, and Kings Cross via the Greenwich Mainline and DLR Station. Greenwich Park and Greenwich Market are a short walk away and offer a variety of local stores, restaurants, and bars for residents to enjoy.

Features

- O.I.E.O
- Purpose Built
- No Work Required
- Ground Floor
- Sought After Location
- Long Lease

Blackheath Hill,
London, SE10



Total area (approx.): 46.6 sq. m (501.6 sq. ft)