



Blackheath Road, SE10  
£525,000

**Dexters**



## Blackheath Road, SE10

A charming two bedroom period conversion flat which is situated in a sought after location and has been finished to a great standard. This would make an ideal first purchase.

Ideally located on Blackheath Road in Greenwich, which is just a short walk from Greenwich and Deptford Bridge stations. The property is a great base from which to explore the attractions of Greenwich, with sights including the Cutty Sark, museums, observatory, park, market, and River Thames a short walk away. Nearby Deptford is one of London's most vibrant art and culture hotspots.

### Features

- Communal Garden
- Period Conversion
- Two Bedrooms
- Sought After Location
- Period Features
- No Work Required







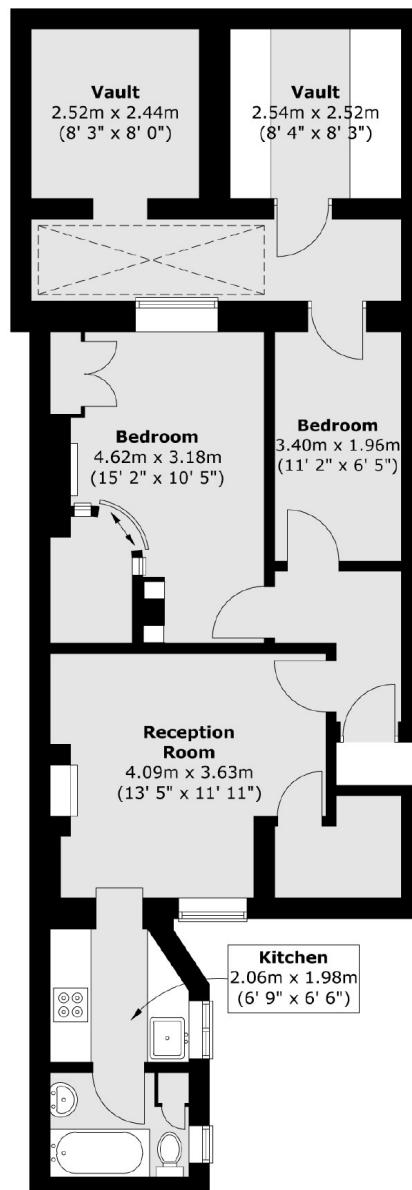








# Blackheath Road, London, SE10



Total area (approx.) : 75.3 sq. m (810 sq. ft)