



Hawthorne Crescent, SE10

£525,000

This well-presented two-bedroom flat with a private balcony is located just a short walk from Maze Hill Station and Greenwich Park, offering a blend of modern living and convenience. The spacious kitchen features ample dining space, and the property benefits from a quiet and friendly neighbourhood with excellent amenities nearby.

Residents have easy access to the Greenwich Centre, which includes a library, gym with pool, and a GP practice, all just across the road. The flat is well connected with mainline rail services to both Cannon Street and King's Cross, as well as easy access to the DLR and Jubilee Line.

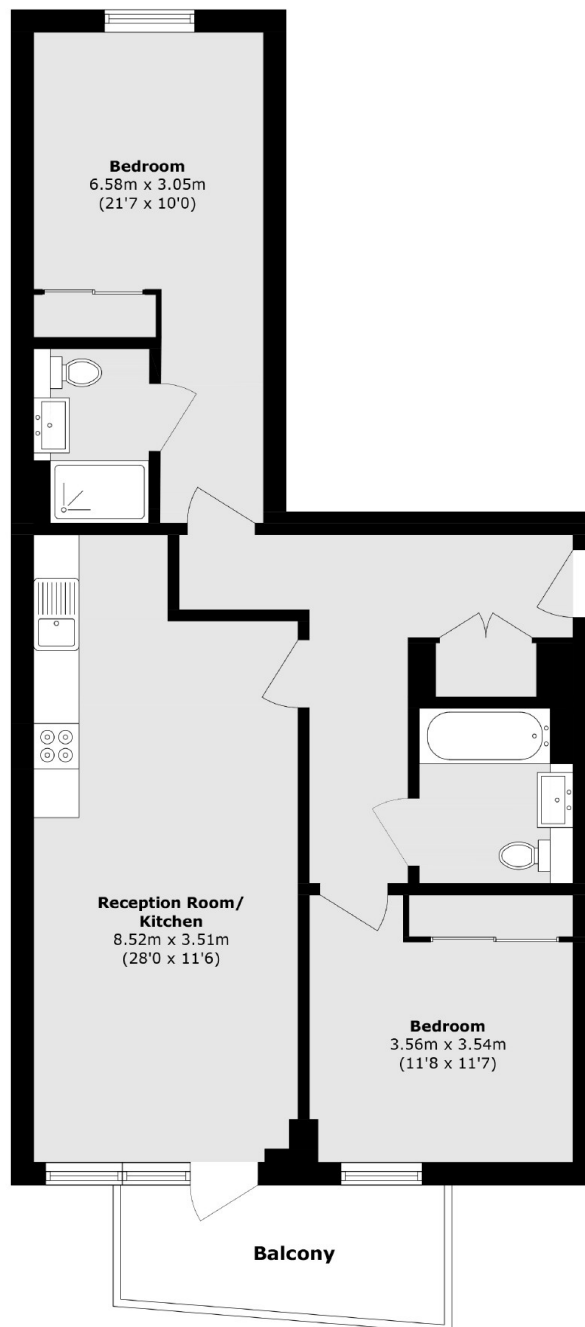
Features

Two Bedrooms

Sought-after Location

Modern Kitchen
Private Balcony

Hawthorne Crescent, London, SE10



Total area (approx.): 80.1 sq. m (934.3 sq. ft)

Balcony area (approx.): 7.2 sq. m (77.5 sq. ft)

Dexters

Greenwich
275 Greenwich High Road
Greenwich
London
Sales
020 8815 2215

Energy Rating: B. We aim to make our particulars both accurate and reliable. However they are not guaranteed; nor do they form part of an offer or contract. If you require clarification on any points then please contact us, especially if you're traveling some distance to view. Please note that appliances and heating systems have not been tested and therefore no warranties can be given as to their good working order.

 **RICS** | Regulated
Estate Agent
and Letting Agent

[dexters.co.uk](https://www.dexters.co.uk)