

West Grove, SE10

£875,000

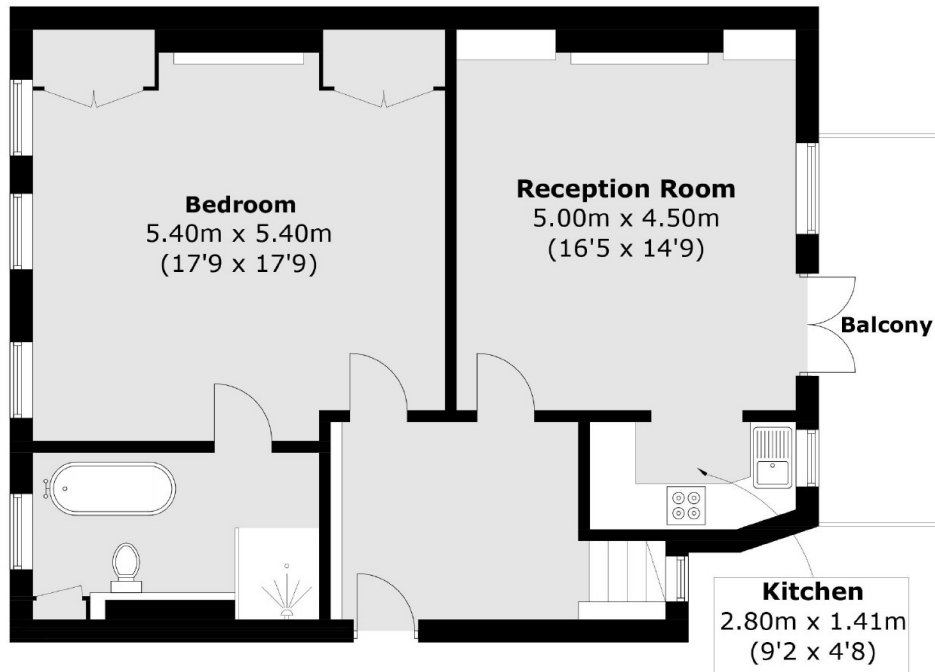
This phenomenal apartment occupies a portion of the second floor of a significant Grade II* listed building. Presented in immaculate order throughout. Comprising a open plan reception room with a vast kitchen/dining room, two bedrooms, two bathrooms and amazing balcony with amazing views. This property is positioned on West Grove, an ancient lane in the heart of Greenwich.

Located within a short walk from the open expanses of Greenwich Park and Blackheath and a short walk from the centre of Greenwich. This unique old town, famous for its maritime history, has an excellent selection of restaurants, pubs and shops, as well as a Greenwich Picturehouse cinema and a theatre. The Old Royal Naval College, designed by Sir Christopher Wren in the 18th century, hosts a popular programme of events in the gardens, including concerts, an open-air theatre and a jazz festival.

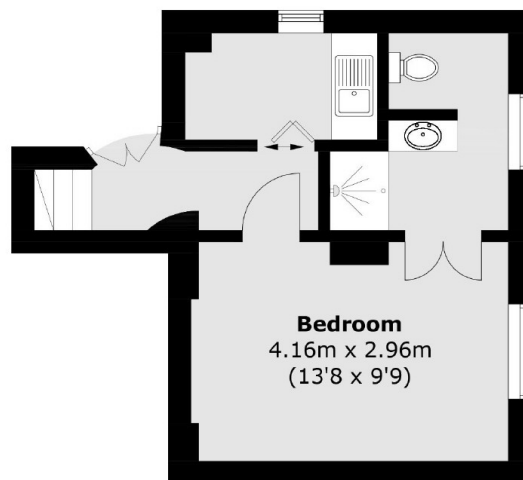
Features

- Period
- Two Bedrooms
- Two Bathrooms
- City Views
- Private Balcony
- Immaculate Throughout

West Grove, London, SE10



Second Floor



First Floor

Total area (approx.): 101.2 sq. m (1,089.2 sq. ft)
Balcony area :8.0 sq. m (86.1 sq. ft)