



## Cutter Lane, SE10

£800,000

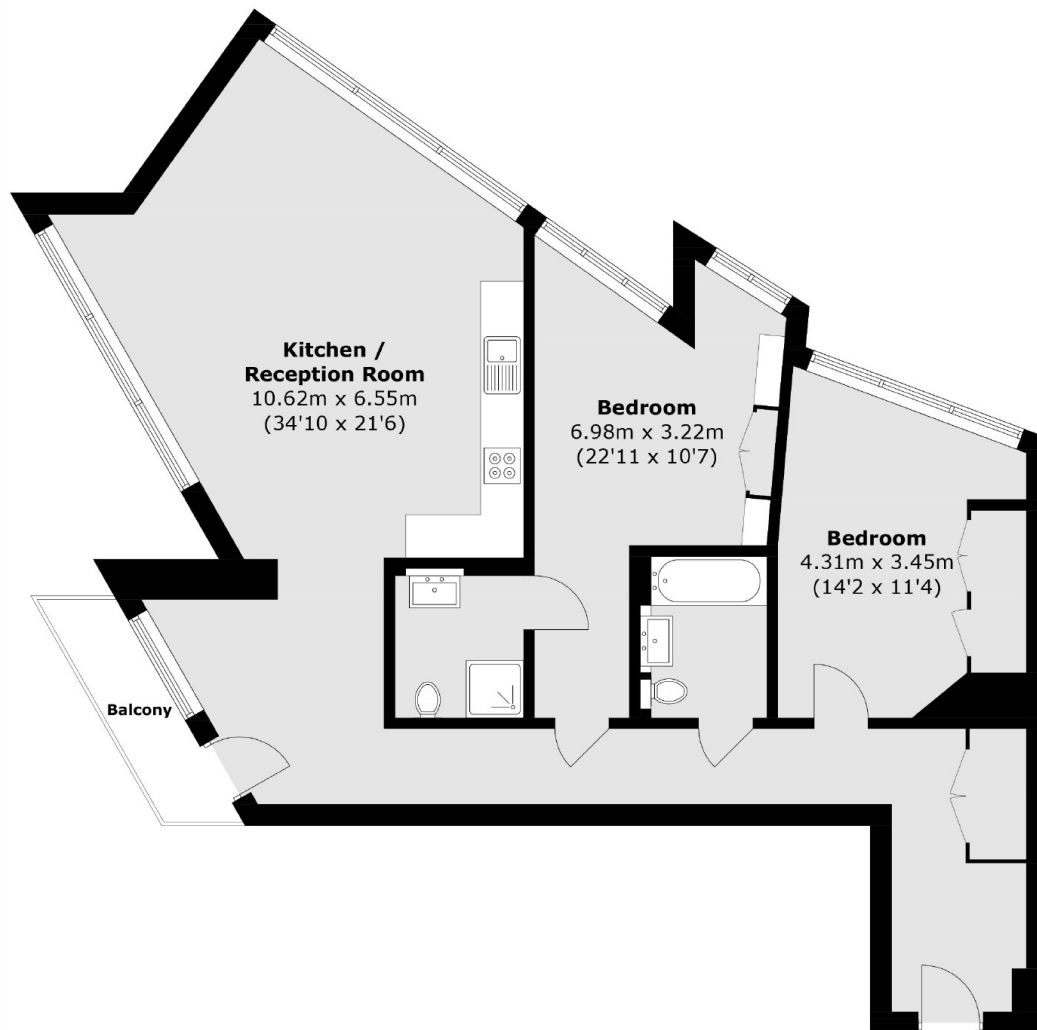
This bright and spacious Apartment has a private balcony to enjoy your serene river views. The generous accommodation features engineered wood flooring that flows throughout the hallway, kitchen and living area, full height windows, a smart 'State of Craft' fitted kitchen, bathroom and ensuite.

Located 300m from North Greenwich bus and tube station, beside North Greenwich Pier and just moments from the IFS Cloud Cable Car, transport links are readily available. Residents of No. 2 Upper Riverside also enjoy access to the 'Upper Riverside Club', offering access to a plethora of superb amenities including three gyms, 15th floor swimming pool, cinema, multimedia room.

### Features

Chain Free  
Immaculate Throughout  
Two Bathrooms  
Two Double Bedrooms  
Tom Dixon Designed  
Swimming Pool

# Cutter Lane, London, SE10



Total area (approx.): 96.7 sq. m (1040.9 sq. ft)  
Balcony: 3.4 sq. m (36.6 sq. ft)

## Dexters

Greenwich  
275 Greenwich High Road  
Greenwich  
London  
Sales  
020 8815 2215

Energy Rating: C. We aim to make our particulars both accurate and reliable. However they are not guaranteed; nor do they form part of an offer or contract. If you require clarification on any points then please contact us, especially if you're traveling some distance to view. Please note that appliances and heating systems have not been tested and therefore no warranties can be given as to their good working order.

 **RICS** | Regulated  
Estate Agent  
and Letting Agent

[dexters.co.uk](https://www.dexters.co.uk)