



Reminder Lane, SE10

£635,000

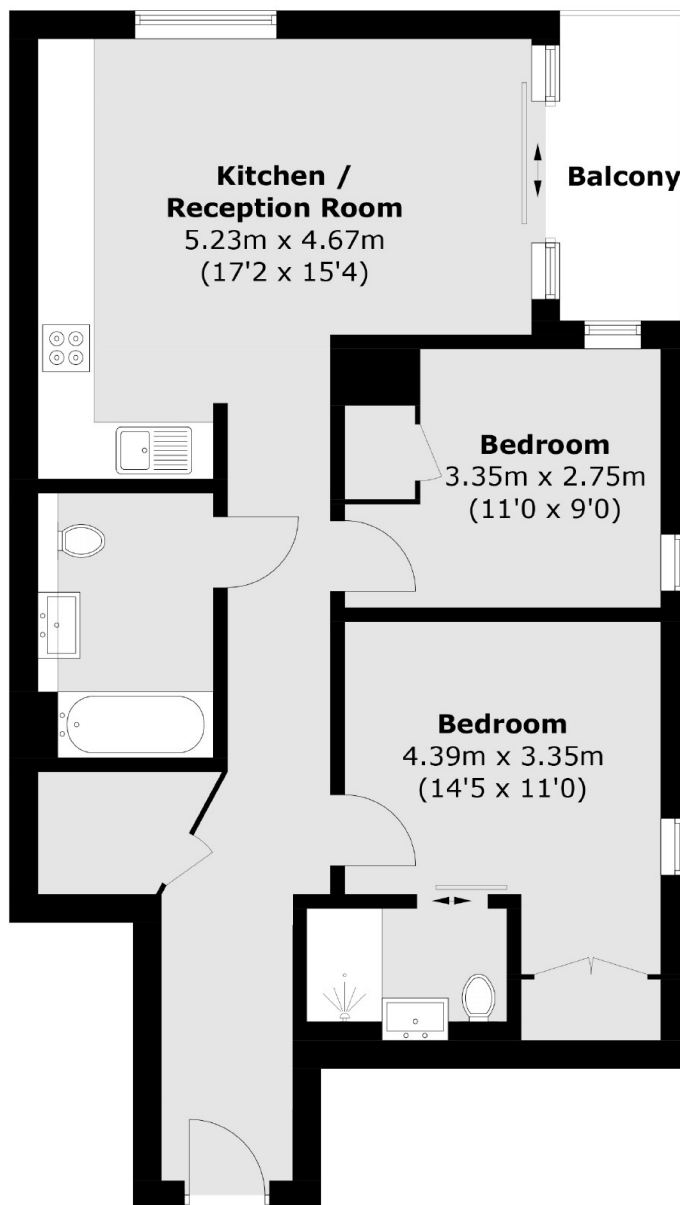
A perfectly presented two bedroom, two bathroom apartment situated in this prestigious building which has private balcony, communal roof terrace, private parking bay and is offered to the market chain free.

Greenwich Peninsula is a modern community that has been designed with the residents in mind offering a range of amenities, which include North Greenwich Station for direct connections to Canary Wharf, London Bridge and The West End. The O2 arena offers an array of bars and restaurants to enjoy as well as a cinema and retail outlet centre.

Features

- Private Parking Bay
- Private Balcony
- Partial River view
- 24hr Concierge
- Residents Gym
- Communal Roof Terrace

Reminder Lane, London, SE10



Total area (approx.): 66.0 sq. m (710.4 sq. ft)
Balcony : 4.3 sq. m (46.3 sq. ft)

Dexters

Greenwich
275 Greenwich High Road
Greenwich
London
Sales
020 8815 2215

Energy Rating: B. We aim to make our particulars both accurate and reliable. However they are not guaranteed; nor do they form part of an offer or contract. If you require clarification on any points then please contact us, especially if you're traveling some distance to view. Please note that appliances and heating systems have not been tested and therefore no warranties can be given as to their good working order.

 **RICS** | Regulated
Estate Agent
and Letting Agent

dexters.co.uk