



## Greenfell Mansions, SE8

£600,000

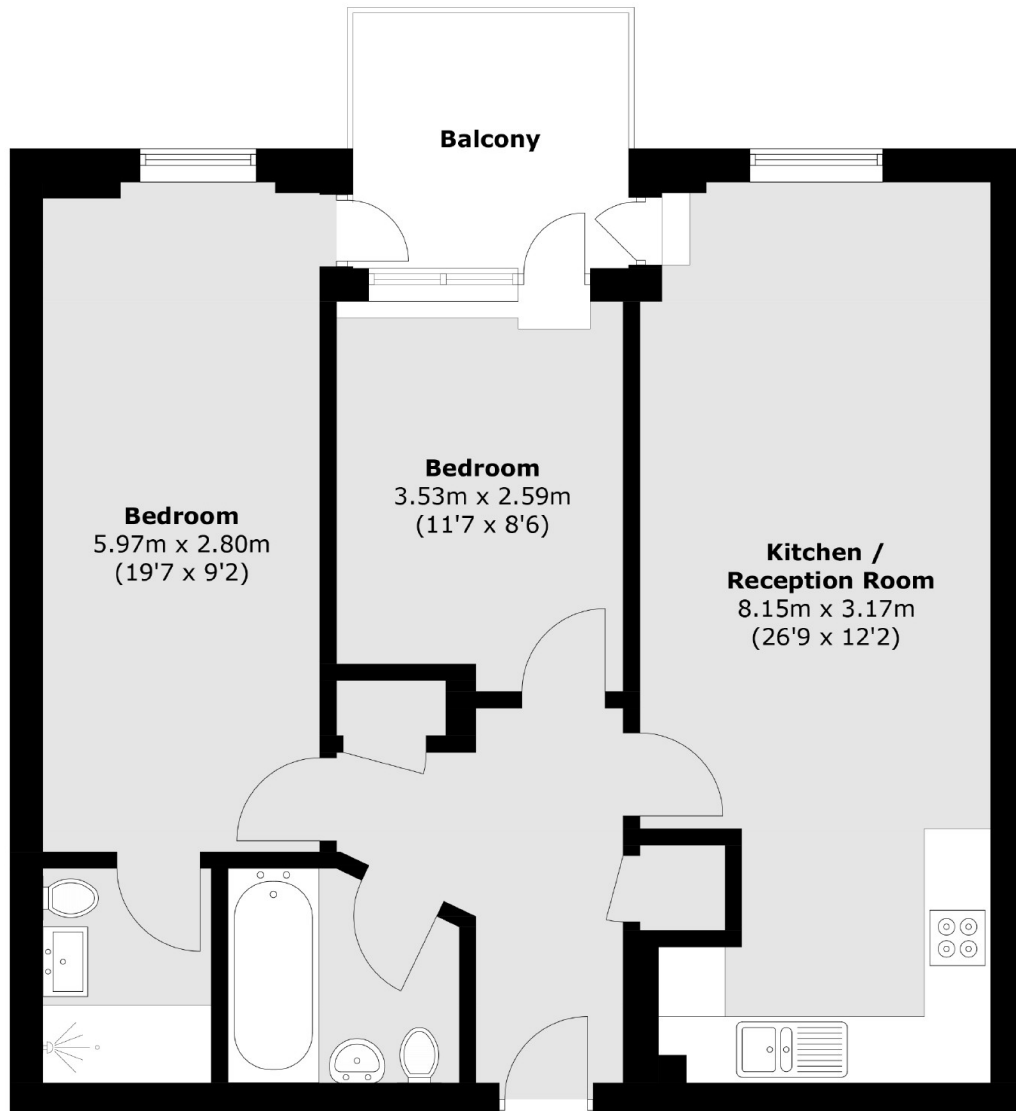
A stunning two double bedroom, two bathroom apartment situated in a sought-after riverside location. Features a large balcony with spectacular views of the Thames and Canary Wharf from the 4<sup>th</sup> floor. Renovated throughout and finished to an immaculate standard. Offers secure underground parking and additional permitted guest parking.

Located in a popular well-maintained development with mature planting and communal garden between historic Greenwich and vibrant Deptford. Just minutes away from the Cutty Sark / Greenwich DLR and Greenwich / Deptford overground stations connecting you to Canary Wharf, London Bridge and Cannon Street. Steps away from the Thames path with its riverside bars and restaurants, and a short walk from beautiful Greenwich Park and all that Greenwich and Deptford have to offer.

### Features

- Large Balcony
- River View/City View
- Two Bedrooms & Two Bathrooms
- Underfloor heating
- Secure underground parking

# Greenfell Mansions, London, SE8



Total area (approx.): 66.8 sq. m (719.0 sq. ft)  
Balcony : 5.7 sq. m (61.3 sq. ft)

## Dexters

Greenwich  
275 Greenwich High Road  
Greenwich  
London  
Sales  
020 8815 2215

Energy Rating: B. We aim to make our particulars both accurate and reliable. However they are not guaranteed; nor do they form part of an offer or contract. If you require clarification on any points then please contact us, especially if you're traveling some distance to view. Please note that appliances and heating systems have not been tested and therefore no warranties can be given as to their good working order.

 **RICS** | Regulated  
Estate Agent  
and Letting Agent

[dexters.co.uk](https://www.dexters.co.uk)