



## Haddo Street, SE10

### £390,000

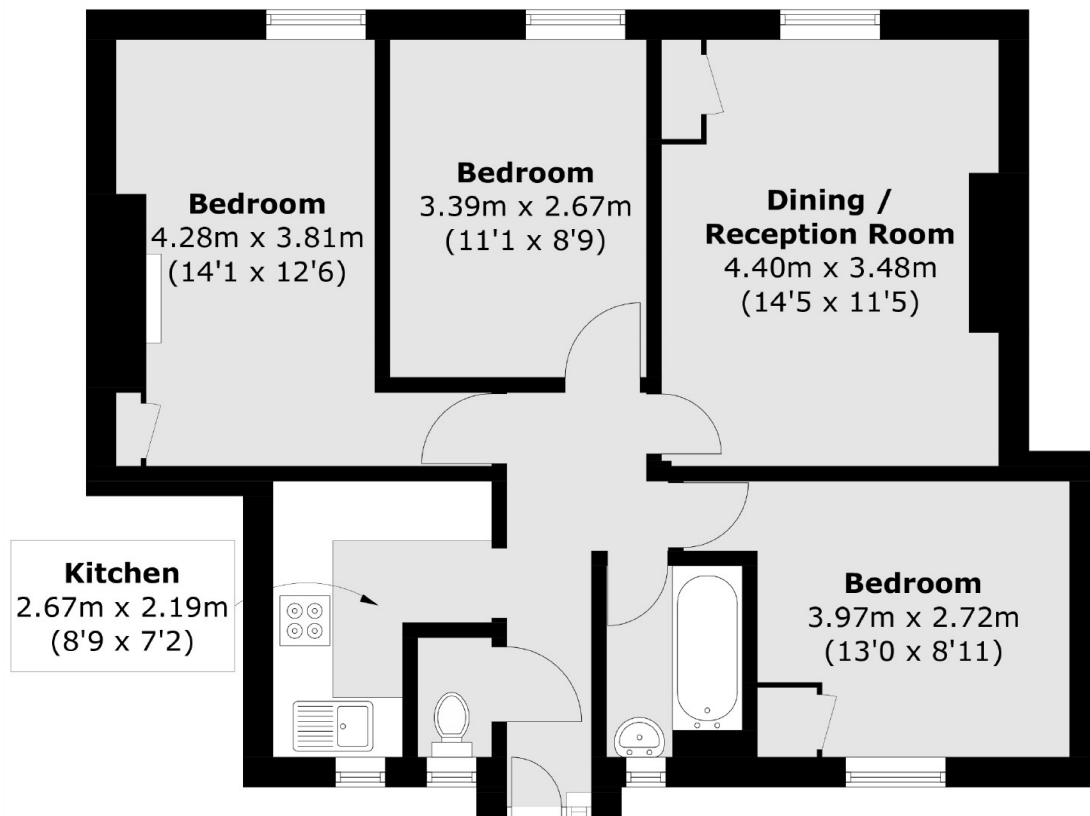
A three bedroom top floor, Situated in a sought after location. This property would make an ideal first purchase or even BTL investment.

Located in the heart of Greenwich for independent shops, bars and restaurants, Greenwich Mainline and DLR Station is a short walk away providing direct connections to Canary Wharf, Bank, London Bridge, Cannon Street and Kings Cross. While the Greenwich Park and Greenwich Market are both within easy reach.

### Features

- Three Bedrooms
- Sought After Location
- Top Floor With A Lift
- Ideal First Purchase
- Purpose Built
- Long Lease

Haddo Street,  
London, SE10



Total area (approx.): 61.4 sq. m (660.9 sq. ft)

**Dexters**

Greenwich  
275 Greenwich High Road  
Greenwich  
London  
Sales  
020 8815 2215

Energy Rating: D. We aim to make our particulars both accurate and reliable. However they are not guaranteed; nor do they form part of an offer or contract. If you require clarification on any points then please contact us, especially if you're traveling some distance to view. Please note that appliances and heating systems have not been tested and therefore no warranties can be given as to their good working order.

 **RICS** | Regulated  
Estate Agent  
and Letting Agent

[dexters.co.uk](https://www.dexters.co.uk)