



Greenfell Mansions, SE8

£600,000

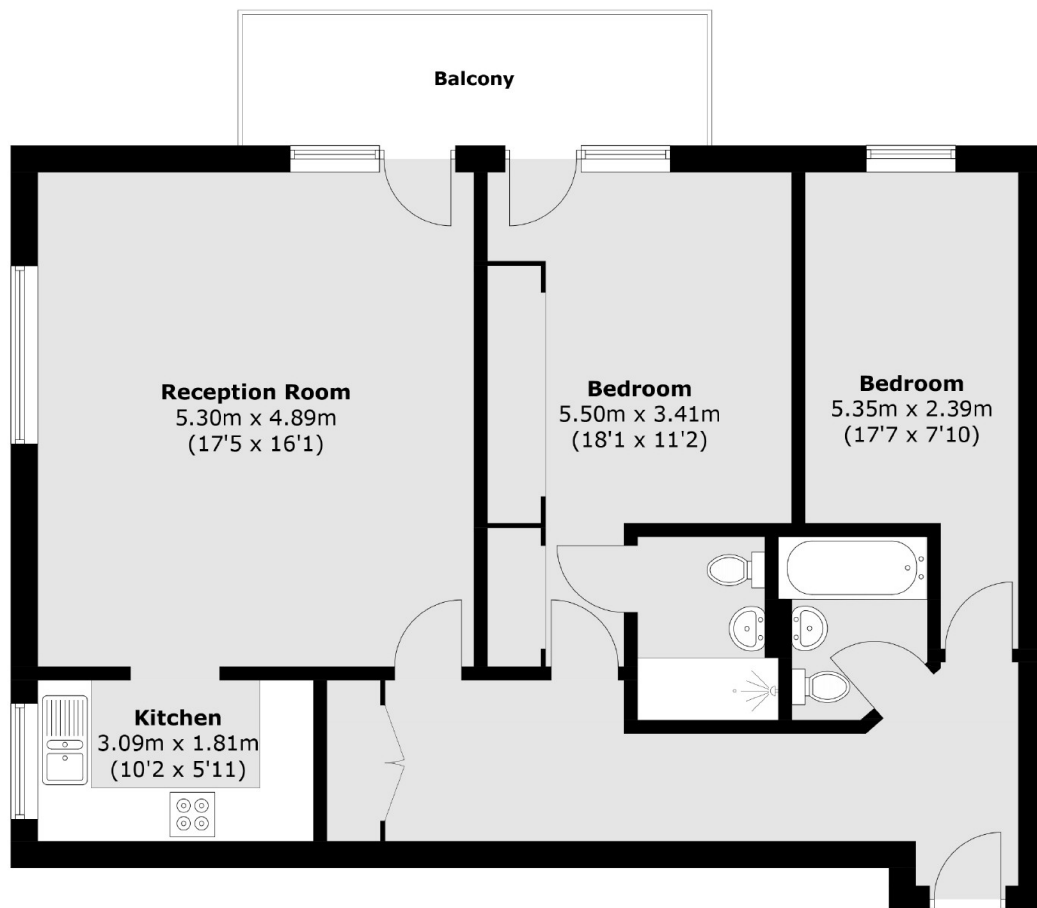
An immaculately presented two bedroom flat with two bathrooms which benefits from a spacious open-plan living-dining area and large balcony with amazing river and city views, providing plenty of natural light throughout the day. The property further benefits from parking and is offered chain-free.

Excellent located just minutes away from Greenwich DLR and overground stations that take you into London Bridge, Cannon Street and Canary Wharf in a matter of minutes. There are also plenty of restaurants, bars and shops located a short walk away along the river. Situated on the Thames river path, taking you through Greenwich past the Cutty Sark and onto the o2 .

Features

Amazing city & River Views
Parking
Private Balcony
Two Bedrooms
Two Bathrooms
Chain Free

Greenfell Mansions, London, SE8



Total area (approx.): 83.5 sq. m (898.8 sq. ft)
Balcony : 7.6 sq. m (81.8 sq. ft)