

## Greenfell Mansions, SE8

£650,000

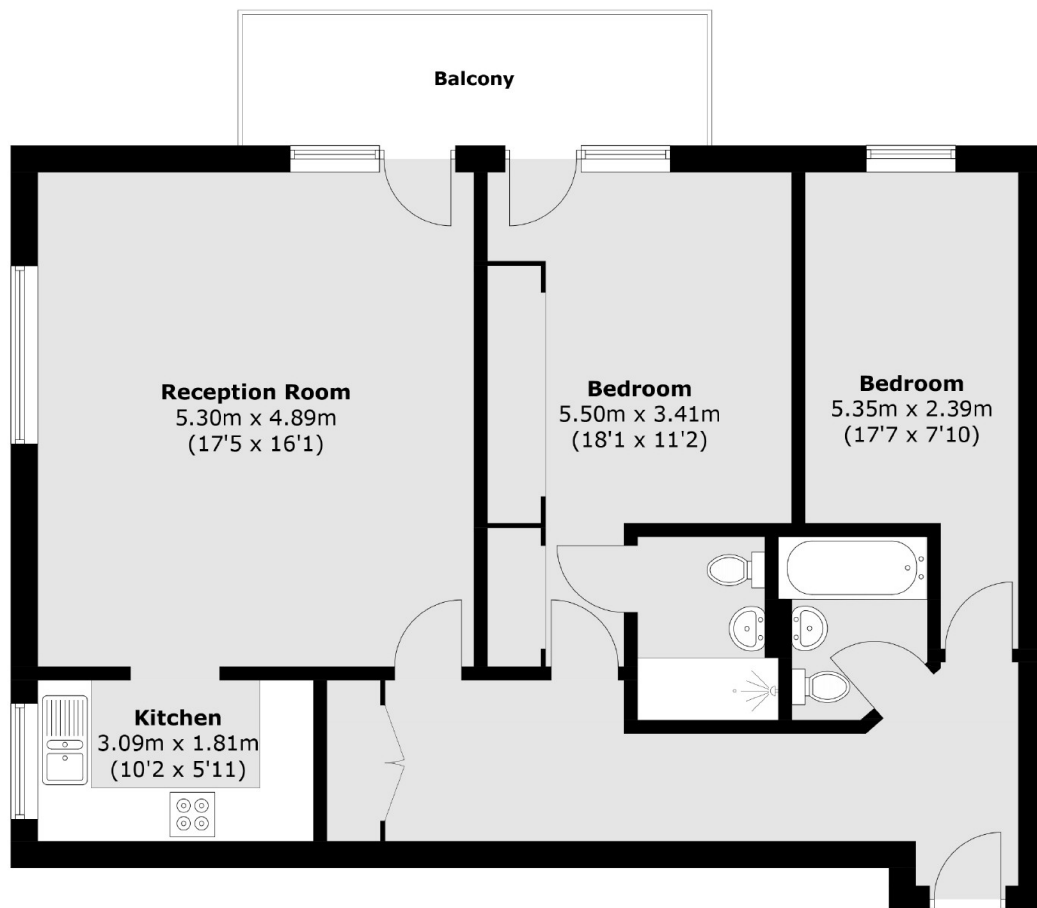
An immaculately presented two bedroom flat with two bathrooms which benefits from a spacious open-plan living-dining area and large balcony with amazing river and city views, providing plenty of natural light throughout the day. The property further benefits from parking and is offered chain-free.

Excellently located just minutes away from Greenwich DLR and overground stations that take you into London Bridge, Cannon Street and Canary Wharf in a matter of minutes. There are also plenty of restaurants, bars and shops located a short walk away along the river. Situated on the Thames river path, taking you through Greenwich past the Cutty Sark and onto the o2 .

### Features

Amazing city & River Views  
Parking  
Private Balcony  
Two Bedrooms  
Two Bathrooms  
Chain Free

# Greenfell Mansions, London, SE8



Total area (approx.): 83.5 sq. m (898.8 sq. ft)  
Balcony : 7.6 sq. m (81.8 sq. ft)

## Dexters

Greenwich  
275 Greenwich High Road  
Greenwich  
London  
Sales  
020 8815 2215

Energy Rating: B. We aim to make our particulars both accurate and reliable. However they are not guaranteed; nor do they form part of an offer or contract. If you require clarification on any points then please contact us, especially if you're traveling some distance to view. Please note that appliances and heating systems have not been tested and therefore no warranties can be given as to their good working order.

 **RICS** | Regulated  
Estate Agent  
and Letting Agent

[dexters.co.uk](https://www.dexters.co.uk)