



Trafalgar Grove, SE10

£450,000

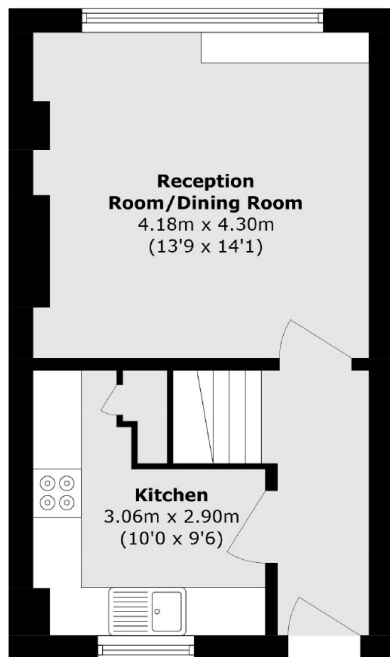
A charming two bedroom purpose built flat light and airy flat which has been finished to a great standard in a sought after location and benefits from a communal roof terrace with city views.

Travers house is perfectly located on the corner Trafalgar Road and sits on the cusp of East and West Greenwich. The Royal Park with its Observatory is within a minutes walk. The town centre is also extremely close by, which offers a fantastic selection of shops and restaurants, along with mainline rail, DLR, riverboat service and Greenwich Market.

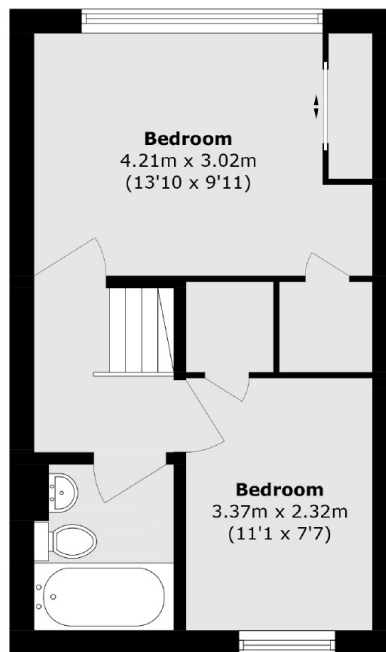
Features

- Two Bedroom
- Chain Free
- Communal Roof Terrace
- Ideal First Purchase
- No Work Required
- Purpose Built

Trafalgar Grove, London, SE10



Second Floor



Third Floor

Total area (approx.): 62.6 sq. m (673.8 sq. ft)