



Greenwich High Road, SE10

£500,000

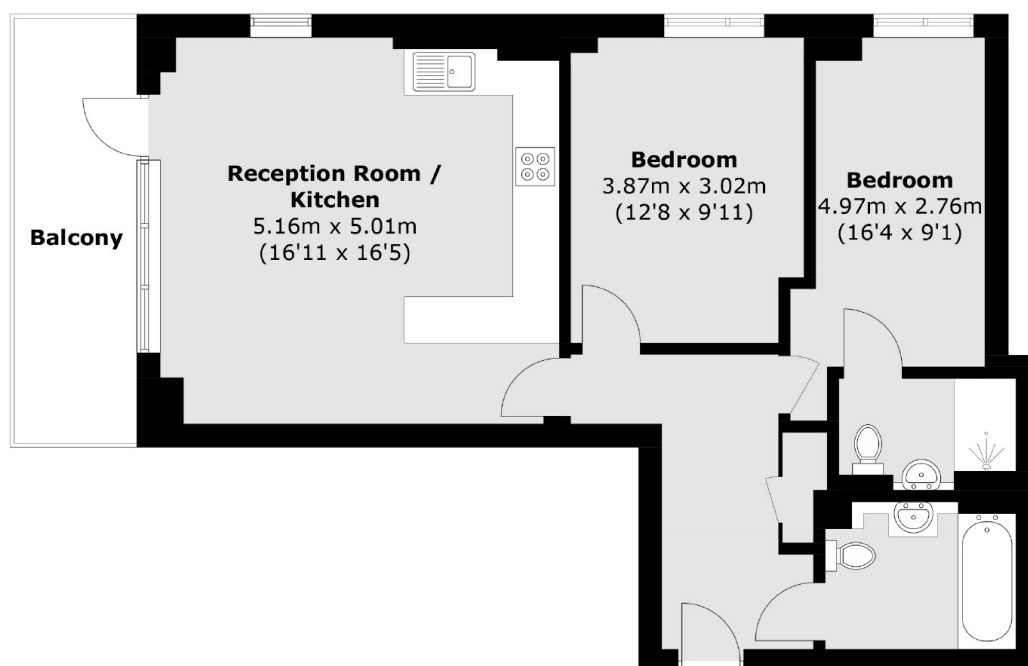
A perfectly presented, two double bedroom modern apartment, positioned in Cowan House, a popular gated-development. The property also benefits from a private balcony, overlooking the creek and towards London and the perfect space for alfresco dining,

Cowan Hosue is conveniently located at the lower end of Greenwich High Road for all the attractions Royal Greenwich offers. The apartment is situated moments away from mainline rail and DLR, offering easy access to the city and Canary Wharf. The town centre is also within close proximity, where you can enjoy a variety of shops, restaurants, Greenwich Market, The Royal Park, and riverboat service.

Features

- Two Bedrooms
- Two Bathrooms
- Immaculate Throughout
- Creek Views
- Sought After Location
- Ideal First Purchase

Greenwich High Road, London, SE10



Total area (approx.): 67.3 sq. m (724.4 sq. ft)
Balcony area: 8.8 sq. m (94.7 sq. ft)