



Dowells Street, SE10

£450,000

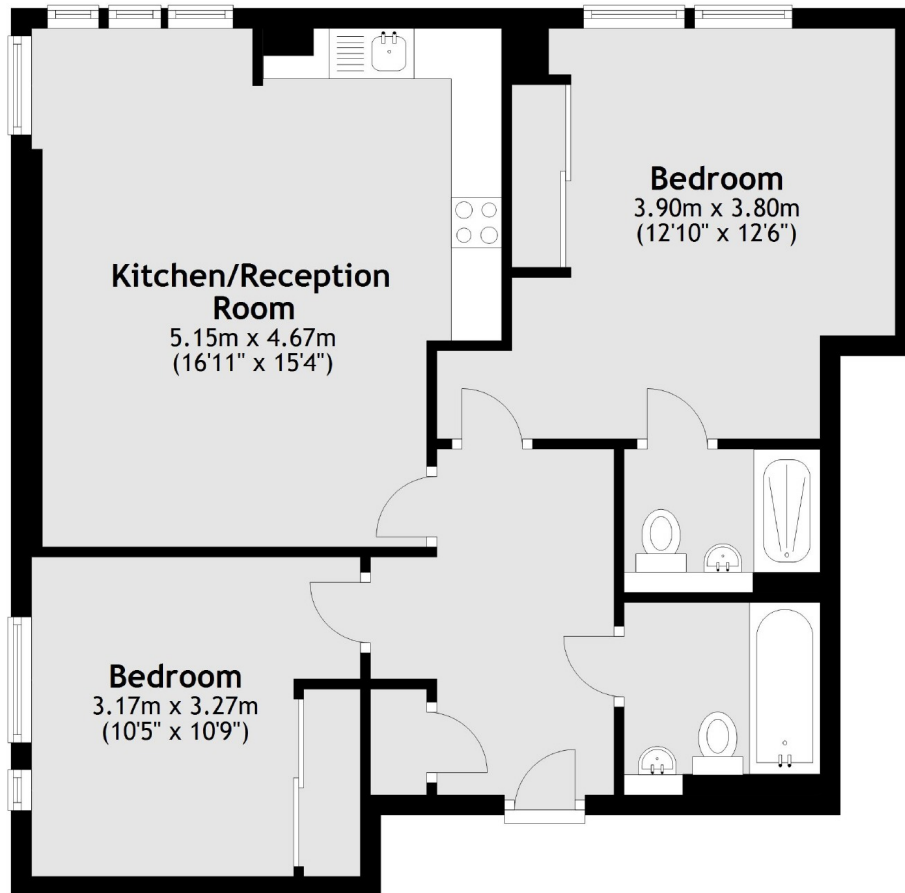
Located on the ninth floor and offering 700 sq.ft of ample living space is this two bedroom home located in one of SE10's sought after riverside developments. Features to include open plan reception room, allocated parking space and no onward chain.

Greenwich offers a fantastic range of amenities such as restaurants, bars and cafes (many of which sit on the River Thames), the famous Greenwich market, and of course the stunning Greenwich Park. For great transport links into central London, Cutty Sark and Greenwich Stations are under a quarter of a mile away.

Features

- Riverside Development
- Open Plan Reception
- Two Bedrooms
- Two Bathrooms
- Allocated Parking
- No Onward Chain

Dowells Street,
London, SE10



Total area: approx. 64.5 sq. metres (694.2 sq. feet)

Dexters

Greenwich
275 Greenwich High Road
Greenwich
London
Sales
020 8815 2215

Energy Rating: B. We aim to make our particulars both accurate and reliable. However they are not guaranteed; nor do they form part of an offer or contract. If you require clarification on any points then please contact us, especially if you're traveling some distance to view. Please note that appliances and heating systems have not been tested and therefore no warranties can be given as to their good working order.



dexters.co.uk