



## River Gardens Walk, SE10

### £1,200,000

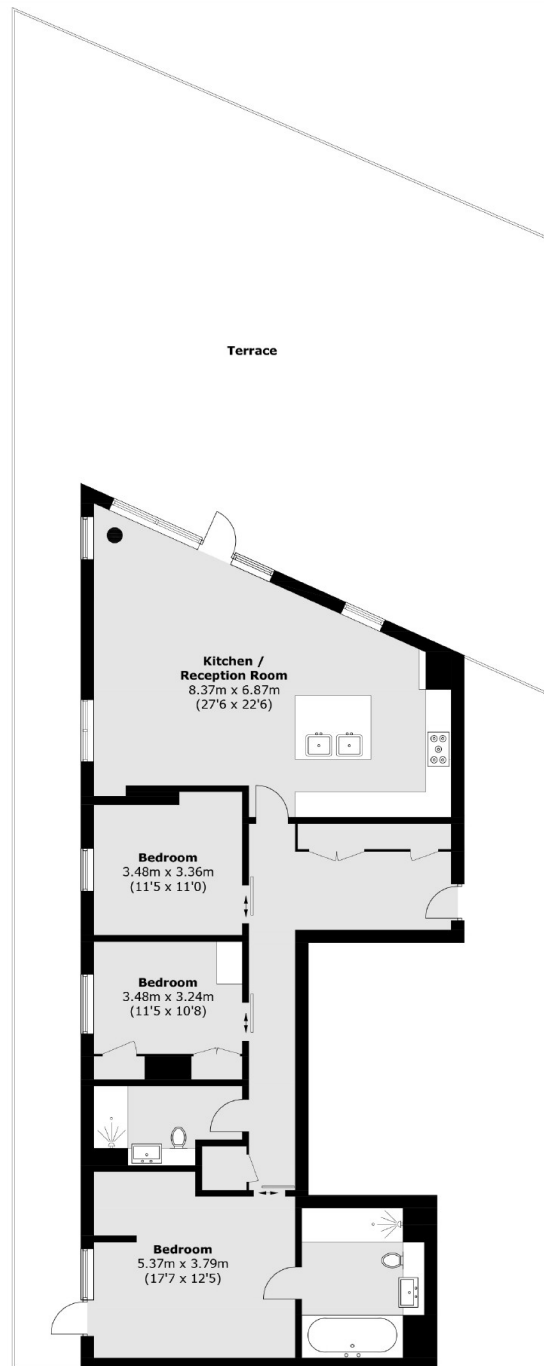
A well presented three bedroom, two bathroom penthouse with phenomenal city and river views from the private roof terrace which is situated in a sought after location. The development offers a 24 hour concierge and also access to private leisure facilities, which include a swimming pool, gymnasium, tennis court and gardens within the grounds and further benefits from a parking space.

The River Gardens development is located on the banks of the Thames and has a fantastic community feel with the beautiful Greenwich Park, Thames Pathway, University of Greenwich, the Old Naval College, National Maritime Museum, Royal Observatory, listed buildings and pubs of Greenwich town, and Greenwich Market. Maze Hill Rail Station is a short walk away and allows for a 13-15 minute journey into London Bridge station, the Cutty Sark DLR provides a direct link to Canary Wharf (Jubilee and Elizabeth Line) and Bank.

### Features

- Penthouse
- Gym
- Three Bedrooms
- Swimming Pool
- Private Roof Terrace
- Two Bathrooms

# River Gardens Walk, London, SE10



Total area (approx.): 126.4 sq. m (1,360.6 sq. ft)  
Terrace: 165.3 sq. m (1,779.3 sq. ft)

## Dexters

Greenwich  
275 Greenwich High Road  
Greenwich  
London  
Sales  
020 8815 2215

Energy Rating: B. We aim to make our particulars both accurate and reliable. However they are not guaranteed; nor do they form part of an offer or contract. If you require clarification on any points then please contact us, especially if you're traveling some distance to view. Please note that appliances and heating systems have not been tested and therefore no warranties can be given as to their good working order.

 **RICS** | Regulated  
Estate Agent  
and Letting Agent

[dexters.co.uk](https://www.dexters.co.uk)