



Dowells Street, SE10

£1,100,000

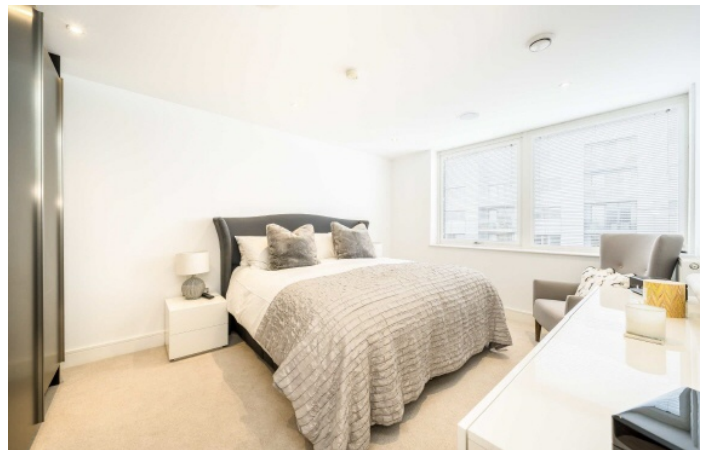
An opportunity to acquire this amazing two double bedroom, two bathroom duplex penthouse situated in this desirable peaceful development with concierge facilities. The apartment benefits from a private balcony with breath-taking views of the river and City skyline and further benefiting from a private roof terrace.

Beacon Point is set within a peaceful residential development moments away from the array of amenities and attractions found in nearby Greenwich Village. For great transport links into central London, Cutty Sark and Greenwich Stations are also close by.

Features

Duplex Penthouse
Immaculate Throughout
City Skyline Views
Private Parking

Secure Modern Development
With Concierge

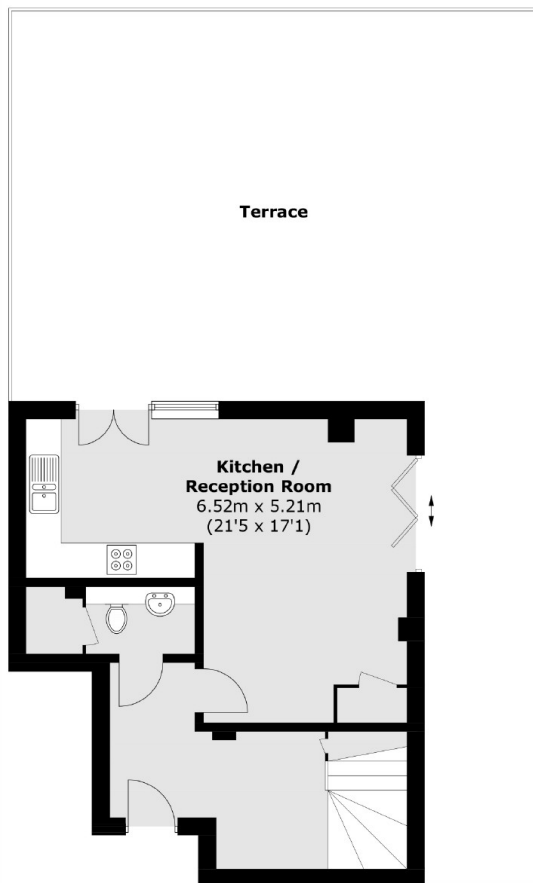


Dowells Street, SE10

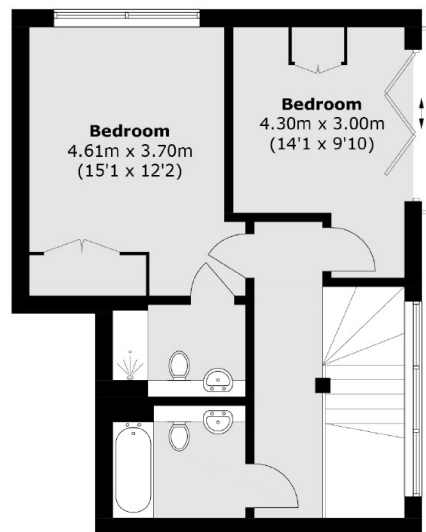
The property further benefits from two adjacent car parking spaces with electric sockets. The two bedrooms and kitchen/ reception room have air conditioning with independent controllers for the 3 zones accessed via the Control 4 home automation system and wall panels. There is underfloor heating in both upstairs bathrooms.



Dowells Street, London, SE10



Ninth Floor



Tenth Floor

Total area (approx.): 93.0 sq. m (1,001.0 sq. ft)
Terrace : 76.3 sq. m (821.3 sq. ft)