



## Peartree Way, SE10

### £425,000

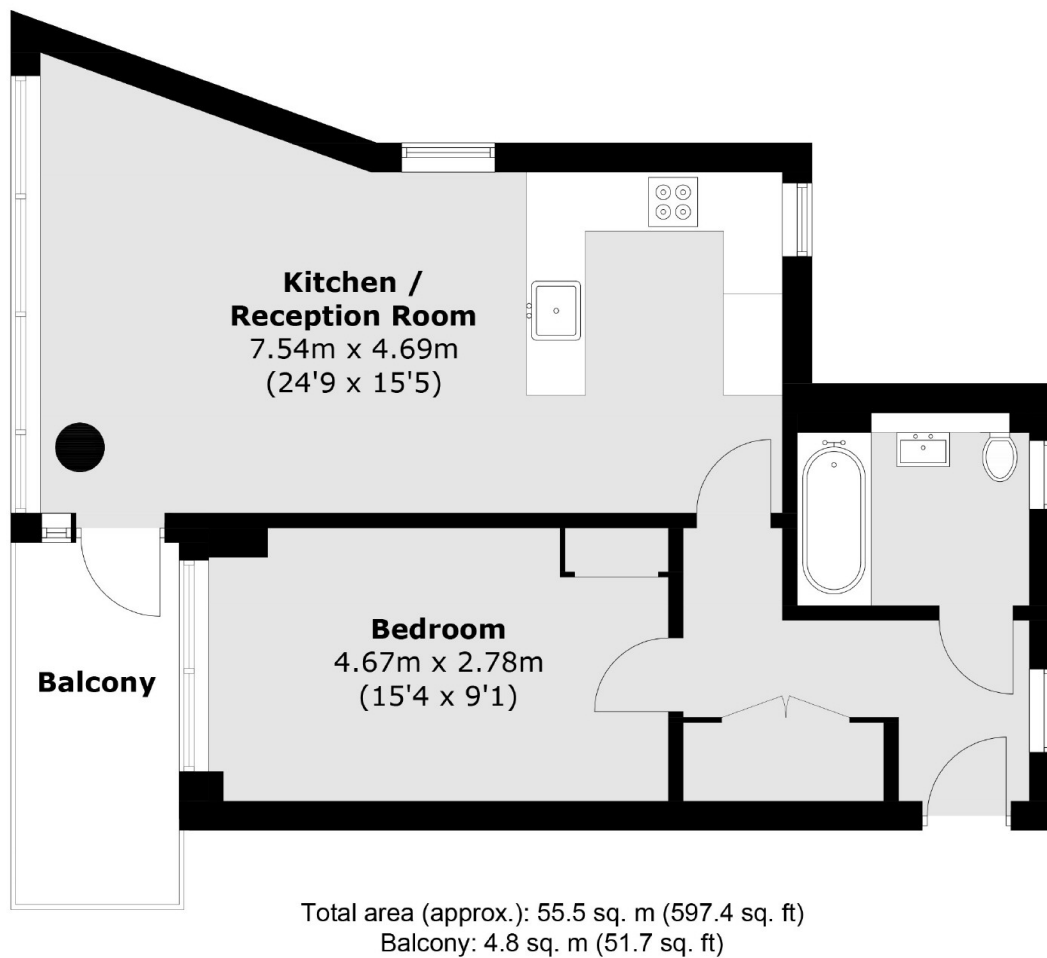
This immaculately presented one double bedroom apartment, situated on the seventh floor of this modern development and benefits from unobstructed windows facing North, East, South, and West views from the private balcony.

Coneybear point is located within walking distance of the O2 which hosts a wide selection of bars, restaurants and cinema. The North Greenwich cable car is also nearby. North Greenwich tube station provides links to Canary Wharf and London Bridge. Charlton and Westcombe Park overground. Greenwich Millennium Village features an abundance of landscaped green areas and riverside walkways. The development has a primary school and local shopping facilities. Retail outlets as well as the local shopping facilities. There are excellent transport links with easy access onto the A102, A2 and A13.

### Features

- Private Balcony
- Sought After Location
- Modern Open-Plan Kitchen With Integrated Appliances
- Set Within A Modern Development
- Ideal First Purchase

Peartree Way,  
London, SE10



**Dexters**

Greenwich  
275 Greenwich High Road  
Greenwich  
London  
Sales  
020 8815 2215

Energy Rating: B. We aim to make our particulars both accurate and reliable. However they are not guaranteed; nor do they form part of an offer or contract. If you require clarification on any points then please contact us, especially if you're traveling some distance to view. Please note that appliances and heating systems have not been tested and therefore no warranties can be given as to their good working order.

 **RICS** | Regulated  
Estate Agent  
and Letting Agent

[dexters.co.uk](https://www.dexters.co.uk)