

Cutter Lane, SE10

£850,000

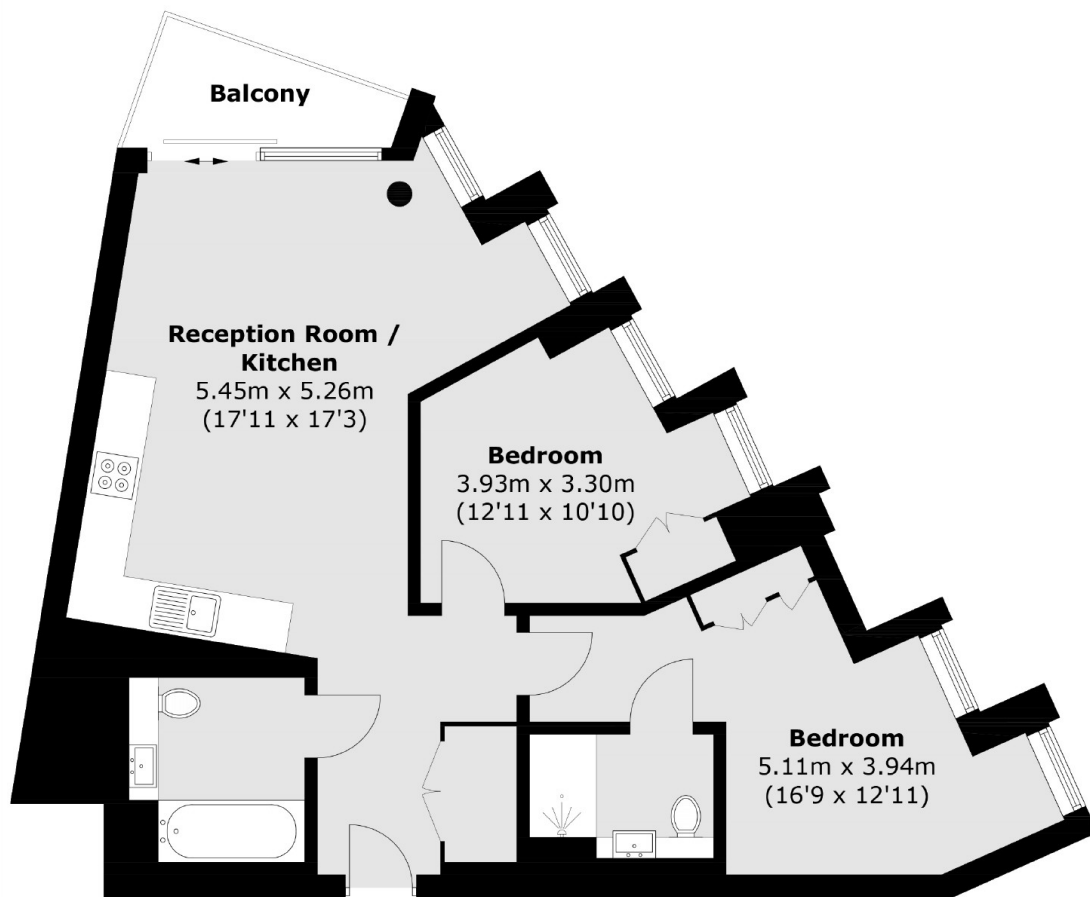
A luxurious two double bedrooms two bathrooms apartment with a private terrace and amazing views across the River Thames. The prestigious building is designed by Design Haus Liberty, the interiors have been inspired by Greenwich Peninsula's unique water-flanked position on the Thames, overlooked from the private terrace.

Located a short walk from North Greenwich bus and tube station, adjacent to the IFS Cloud Cable Car and opposite North Greenwich Pier, transport links are readily available.

Features

- Amazing River Views
- Access to Five Residents Roof Terraces
- 24 Hour Concierge
- Private Terrace
- Two Double Bedrooms
- Parking Space

Cutter Lane, London, SE10



Total area (approx.): 66.8 sq. m (719.0 sq. ft)
Balcony : 3.4 sq. m (36.6 sq. ft)

Dexters

Greenwich
275 Greenwich High Road
Greenwich
London
Sales
020 8815 2215

Energy Rating: B. We aim to make our particulars both accurate and reliable. However they are not guaranteed; nor do they form part of an offer or contract. If you require clarification on any points then please contact us, especially if you're traveling some distance to view. Please note that appliances and heating systems have not been tested and therefore no warranties can be given as to their good working order.

 **RICS** | Regulated
Estate Agent
and Letting Agent

[dexters.co.uk](https://www.dexters.co.uk)