



## Cable Walk, SE10

£625,000

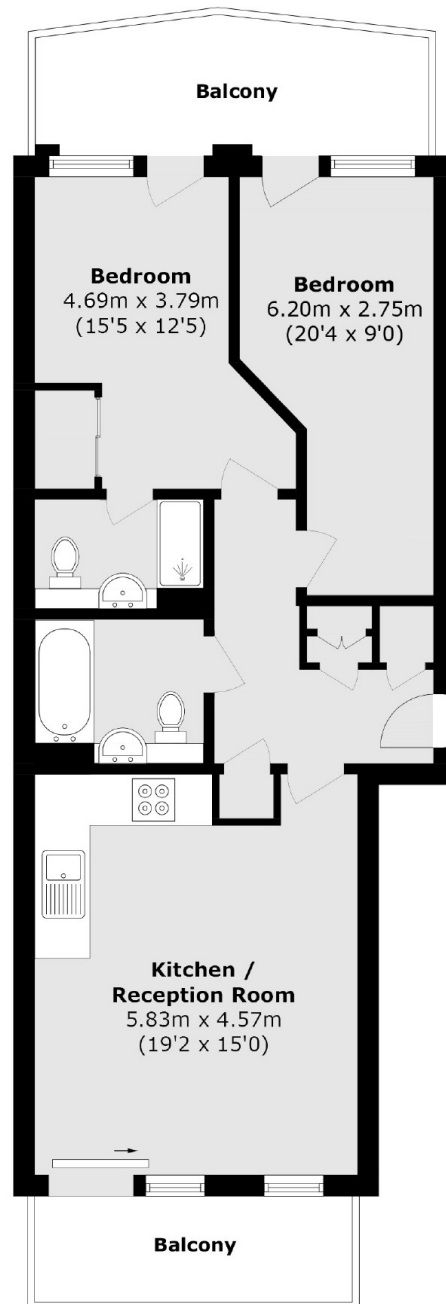
A beautifully presented light filled apartment is in great order throughout with two private balconies which allows bundles of natural light and an open plan kitchen living space as well as two double bedrooms and two bathroom's. The property further benefits from amazing river and city views from the front private balcony.

The apartment is moments from the Thames Path and just a short walk into Greenwich town centre which offers a vibrant mix of independent cafes restaurants, shops and markets and Greenwich Royal Park is also in close proximity. Conveniently located for Maze Hill Station for (London Bridge, Cannon Street and Thameslink services) North Greenwich for the Jubilee Line, Cutty Sark DLR and the Thames Clipper services into Canary Wharf and Central London.

### Features

- Amazing River Views
- Modern Apartment
- Sought After Location
- Two Bathrooms
- Chain Free
- Two Balconies

# Cable Walk, London, SE10



Total area (approx.): 73.5 sq. m (791.1 sq. ft)

Balcony area (approx.): 16.9 sq. m (181.9 sq. ft)