



## Greenwich High Road, SE10

### £500,000

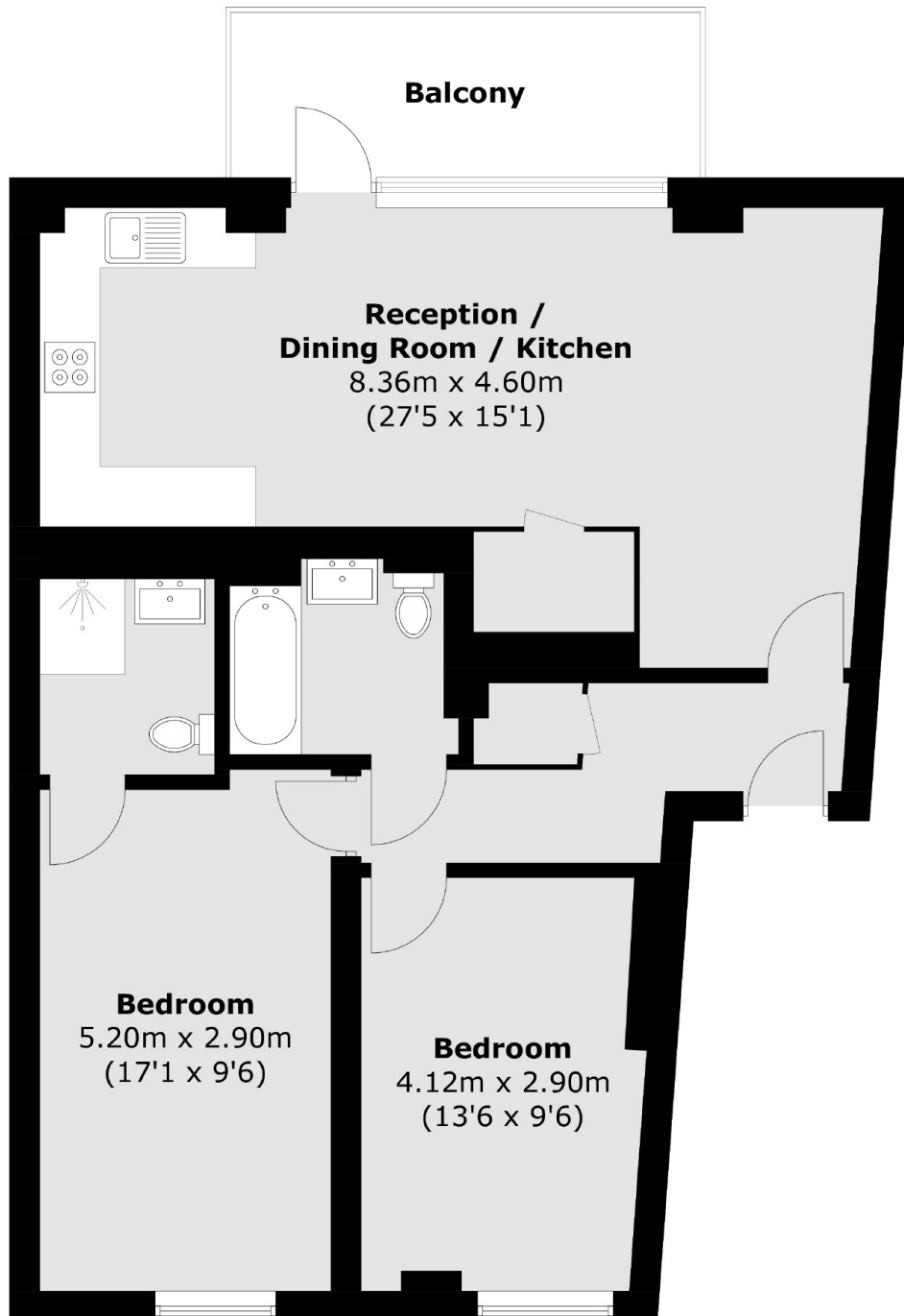
A perfectly presented, two double bedroom two bathroom modern apartment in Cowan House, a popular gated-development. The property also benefits from a private balcony which overlooks the creek.

Cowan House is conveniently located at the lower end of Greenwich High Road for all the attractions Royal Greenwich has to offer, moments from both the DLR at Deptford Bridge as well as the DLR and mainline at Greenwich station; giving fast and easy access into both Canary Wharf and the City.

### Features

- Gated Development
- No Work Required
- Sought After Location
- Ideal First Purchase
- Two Bedrooms
- Two Bathrooms

Greenwich High Road,  
London, SE10



Total area (approx.): 78.0 sq. m (839.6 sq. ft)  
Balcony area (approx.): 7.7 sq. m (82.9 sq. ft)

**Dexters**

Greenwich  
275 Greenwich High Road  
Greenwich  
London  
Sales  
020 8815 2215

Energy Rating: B. We aim to make our particulars both accurate and reliable. However they are not guaranteed; nor do they form part of an offer or contract. If you require clarification on any points then please contact us, especially if you're traveling some distance to view. Please note that appliances and heating systems have not been tested and therefore no warranties can be given as to their good working order.

 **RICS** | Regulated  
Estate Agent  
and Letting Agent

[dexters.co.uk](https://www.dexters.co.uk)