



Greenfell Mansions, SE8

£795,000

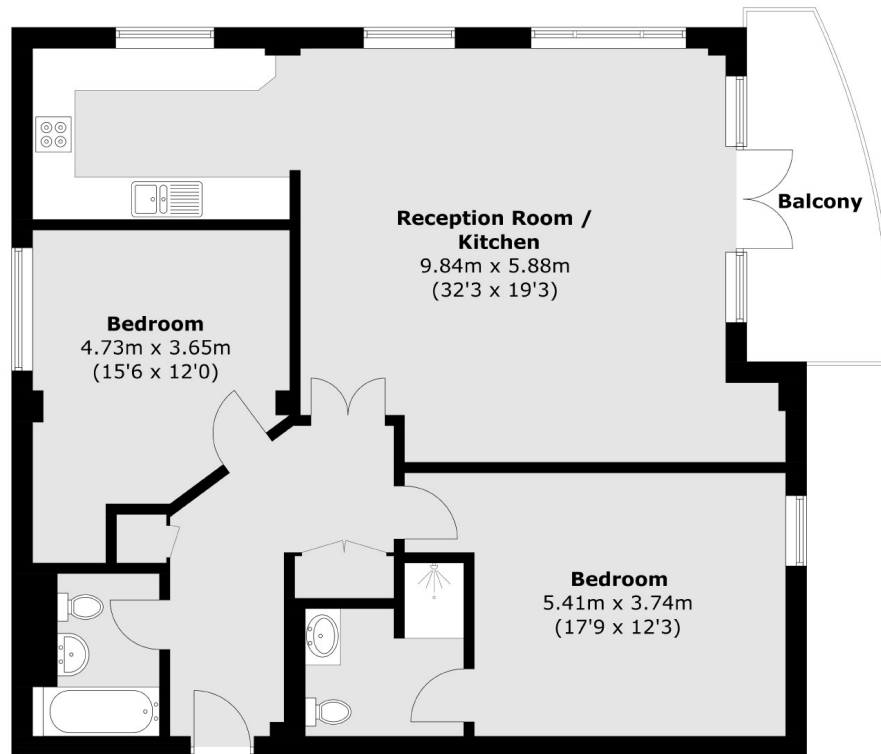
An immaculately presented two bedroom flat with two bathrooms which benefits from a spacious open-plan living-dining area and large balcony with amazing river and city views, providing plenty of natural light throughout the day. The property further benefits from parking and is offered chain-free.

Excellent located just minutes away from Greenwich DLR and overground stations that take you into London Bridge, Cannon Street and Canary Wharf in a matter of minutes. There are also plenty of restaurants, bars and shops located a short walk away along the river. Situated on the Thames river path, taking you through Greenwich past the Cutty Sark and onto the O2.

Features

- Amazing city & River Views
- Parking
- Private Balcony
- Two Bedrooms
- Two Bathrooms
- Chain Free

Greenfell Mansions, London, SE8



Total area (approx.): 100.7 sq. m (1,084.0 sq. ft)
Balcony: 8.4 sq. m (90.4 sq. ft)