



Osier Lane, SE10

£400,000

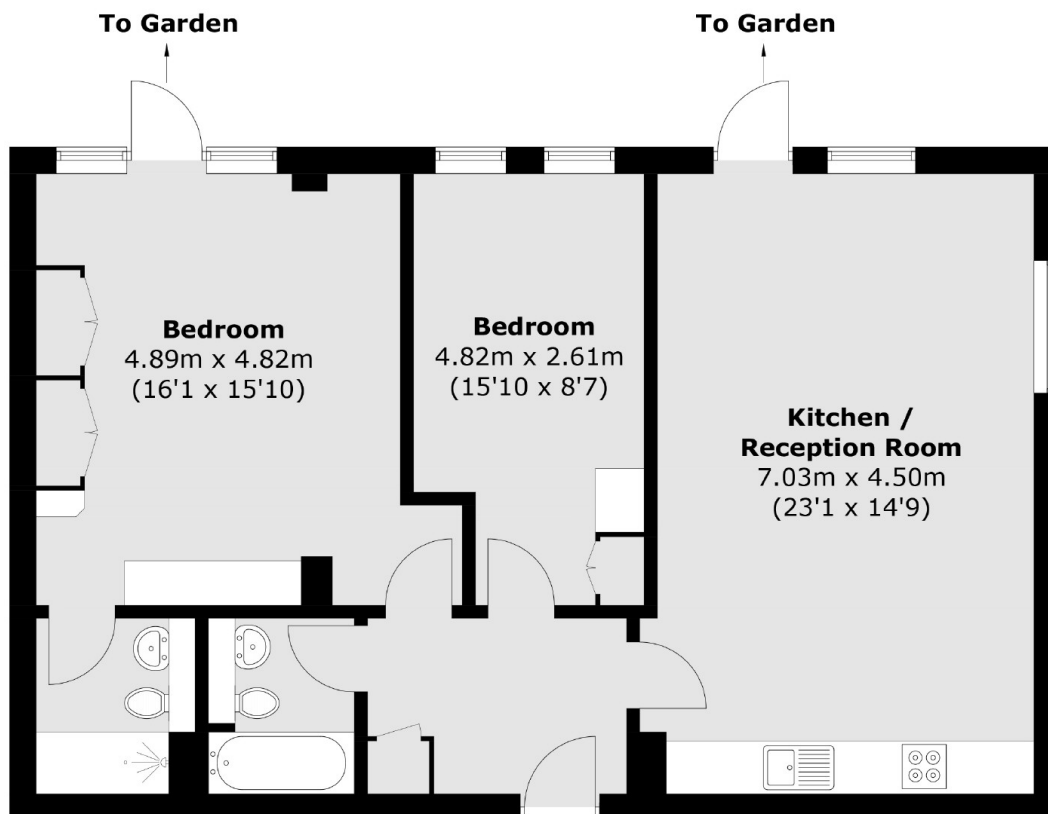
This spacious and well maintained two bedroom apartment is located in the popular development of Greenwich Millennium Village. This property has an abundance of light throughout. Further benefiting from two bathrooms and a private parking space.

Farnsworth Court is set within the Greenwich Millennium Village providing easy access to North Greenwich Tube Station which provides swift access to Canary Wharf, London Bridge and the West End via the Jubilee Line while the Thames Clipper provides an alternative way to commute. Nearby the O2 Arena offers an array of shops, restaurants, bars and a cinema for local residents to enjoy. The property is currently in the catchment area for the very popular and "outstanding" rated Millennium Primary School.

Features

- Two Bedrooms
- Two Bathrooms
- Modern
- Sought After Location
- Private Balcony
- Private Parking

Osier Lane,
London, SE10



Total area (approx.): 79.8 sq. m (859.0 sq. ft)

Dexters

Greenwich
275 Greenwich High Road
Greenwich
London
Sales
020 8815 2215

Energy Rating: C. We aim to make our particulars both accurate and reliable. However they are not guaranteed; nor do they form part of an offer or contract. If you require clarification on any points then please contact us, especially if you're traveling some distance to view. Please note that appliances and heating systems have not been tested and therefore no warranties can be given as to their good working order.

RICS Regulated
Estate Agent
and Letting Agent

dexters.co.uk