



## Greenwich High Road, SE10

### £525,000

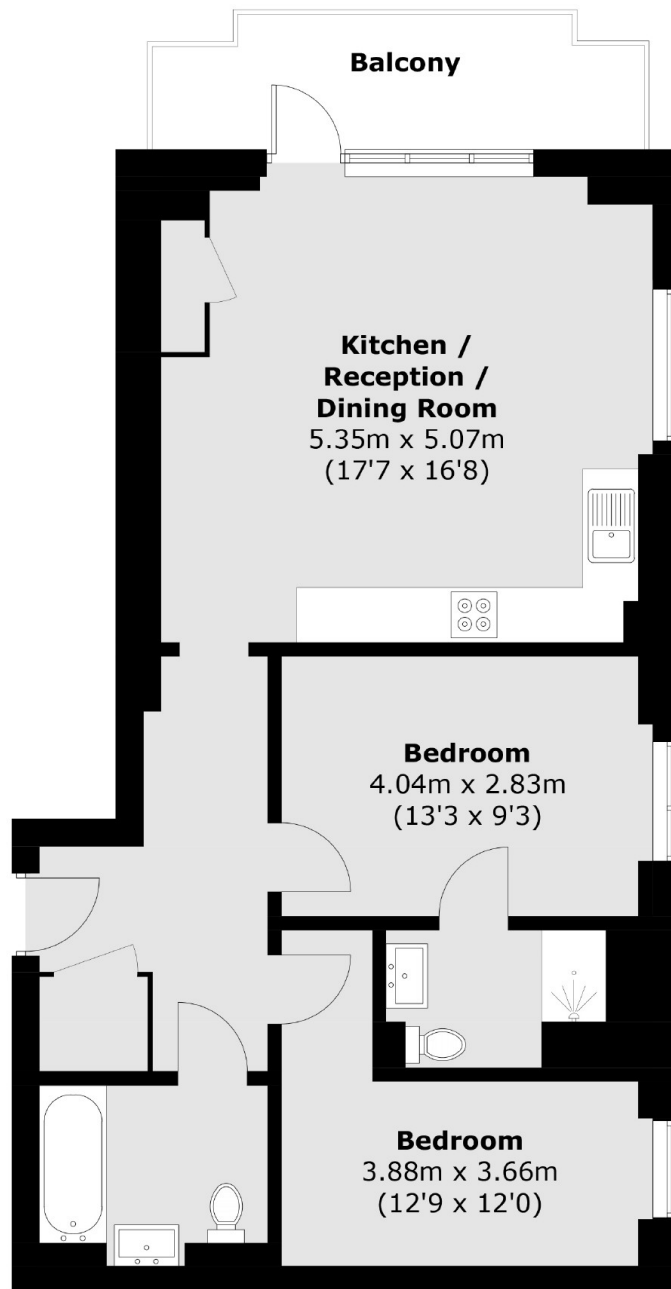
Experience modern luxury living in this immaculately presented two-bedroom apartment located in the highly sought-after Cowan House in West Greenwich, a popular gated development. This 11th-floor property is EWS1 compliant and offers unobstructed panoramic views of iconic London landmarks including the London Eye, Canary Wharf, and Greenwich. Witness the breathtaking sunrise and sunset over the city, and enjoy the New Year fireworks right from the comfort of your home.

Cowan House is conveniently located at the lower end of Greenwich High Road for all the attractions Royal Greenwich offers. The apartment is situated moments away from mainline rail and DLR, offering easy access to the city and Canary Wharf. The town centre is also within close proximity, where you can enjoy a variety of shops, restaurants, Greenwich Market, The Royal Park, and riverboat service.

### Features

- Unobstructed Panoramic Views
- Two-Bedroom Two Bathroom
- Prime West Greenwich Location
- Bespoke Design
- Modern Amenities with Custom-Built Pantry

Greenwich High Road,  
London, SE10



Total area (approx.): 70.0 sq. m (753.5 sq. ft)  
Balcony: 7.3 sq. m (78.6 sq. ft)

**Dexters**

Greenwich  
275 Greenwich High Road  
Greenwich  
London  
Sales  
020 8815 2215

Energy Rating: B. We aim to make our particulars both accurate and reliable. However they are not guaranteed; nor do they form part of an offer or contract. If you require clarification on any points then please contact us, especially if you're traveling some distance to view. Please note that appliances and heating systems have not been tested and therefore no warranties can be given as to their good working order.

 **RICS** | Regulated  
Estate Agent  
and Letting Agent

[dexters.co.uk](https://www.dexters.co.uk)