



## Bessemer Place, SE10

£425,000

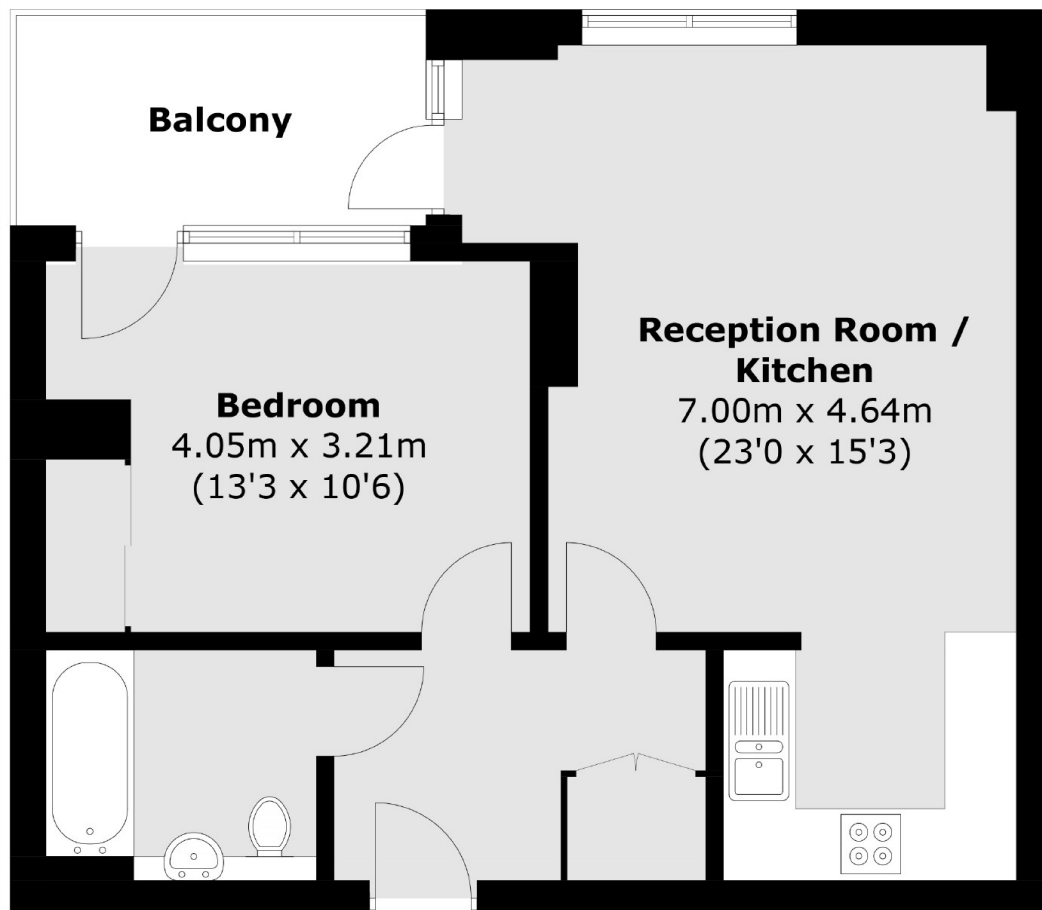
An amazing one bedroom apartment situated in this prestigious building, the property comprises of an open plan kitchen/dining/lounge, one double bedroom and a bathroom off the hallway. The property further benefits from a private balcony with amazing river view.

Greenwich Peninsula is a modern community that has been designed with the residents in mind offering a range of amenities, which include North Greenwich Station for direct connections to Canary Wharf, London Bridge and The West End. The O2 arena which offers an array of bars and restaurants to enjoy as well as a cinema and retail outlet centre.

### Features

- One bedroom
- Ideal First Purchase
- Private Balcony
- Sought After Location
- Modern
- River View

# Bessemer Place, London, SE10



Total area (approx.): 50.8 sq. m 546.8 sq. ft)  
Balcony: 6.1 sq. m (65.7 sq. ft)

## Dexters

Greenwich  
275 Greenwich High Road  
Greenwich  
London  
Sales  
020 8815 2215

Energy Rating: B. We aim to make our particulars both accurate and reliable. However they are not guaranteed; nor do they form part of an offer or contract. If you require clarification on any points then please contact us, especially if you're traveling some distance to view. Please note that appliances and heating systems have not been tested and therefore no warranties can be given as to their good working order.

 **RICS** | Regulated  
Estate Agent  
and Letting Agent

[dexters.co.uk](https://www.dexters.co.uk)