



Reminder Lane, SE10

£375,000

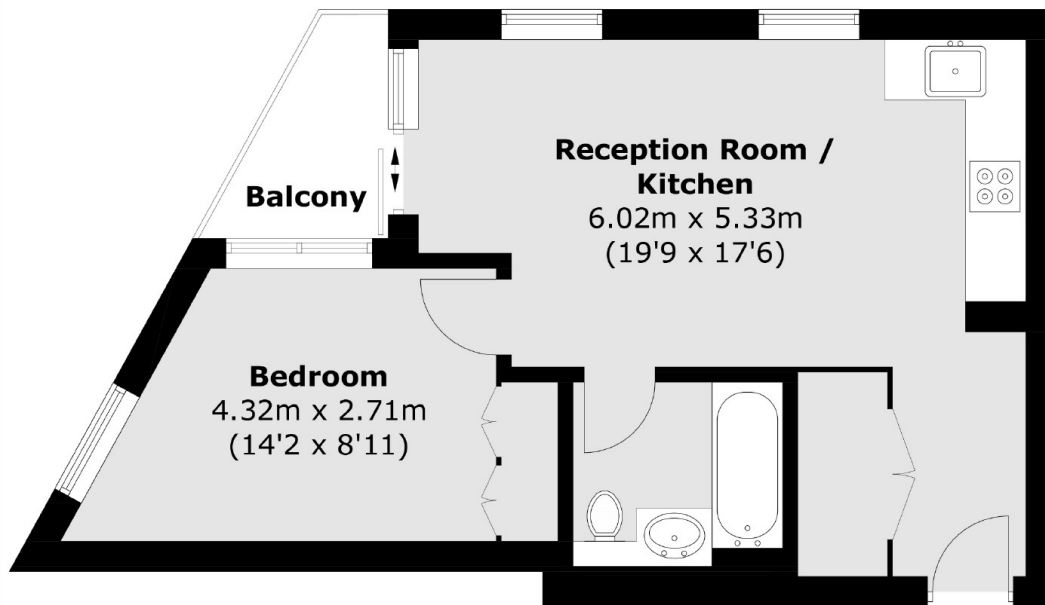
An amazing one bedroom apartment situated in this prestigious building, the property comprises of an open plan kitchen/dining/lounge, one double bedroom and a bathroom off the hallway.

Greenwich Peninsula is a modern community that has been designed with the residents in mind offering a range of amenities, which include North Greenwich Station for direct connections to Canary Wharf, London Bridge and The West End. The O2 arena which offers an array of bars and restaurants to enjoy as well as a cinema and retail outlet centre.

Features

- One bedroom
- Ideal First Purchase
- Private Balcony
- Sought After Location
- Modern
- Chain Free

Reminder Lane, London, SE10



Total area (approx.): 39.4 sq. m (424.1 sq. ft)
Balcony: 2.8 sq. m (30.1 sq. ft)

Dexters

Greenwich
275 Greenwich High Road
Greenwich
London
Sales
020 8815 2215

Energy Rating: B. We aim to make our particulars both accurate and reliable. However they are not guaranteed; nor do they form part of an offer or contract. If you require clarification on any points then please contact us, especially if you're traveling some distance to view. Please note that appliances and heating systems have not been tested and therefore no warranties can be given as to their good working order.

 **RICS** | Regulated
Estate Agent
and Letting Agent

[dexters.co.uk](https://www.dexters.co.uk)