



## Blackheath Hill, SE10

### £300,000

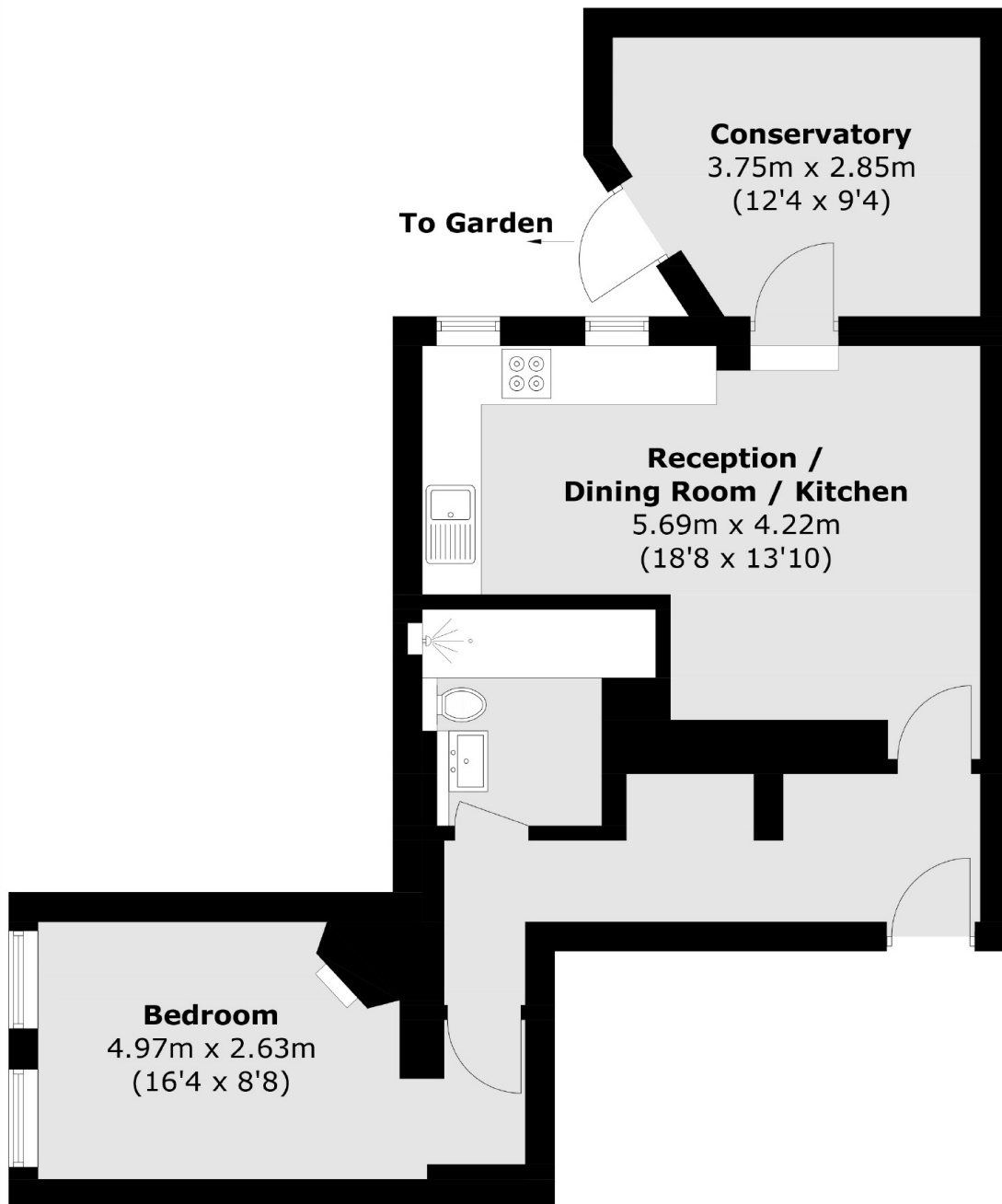
A charming one bedroom ground floor garden flat with its own private front door in a sought after location which benefits from being share of freehold.

Blackheath Hill offers a quick commute to Canary Wharf, London Bridge, Cannon Street, and Kings Cross via the Greenwich Mainline and DLR Station. Greenwich Park and Greenwich Market are a short walk away and offer a variety of local stores, restaurants, and bars for residents to enjoy.

### Features

- One Bedroom
- Period Conversion
- Private Garden
- Moments From The Park
- Sought after Location
- Good Condition

Blackheath Hill,  
London, SE10



Total area (approx.): 57.3 sq. m (616.8 sq. ft)

**Dexters**

Greenwich  
275 Greenwich High Road  
Greenwich  
London  
Sales  
020 8815 2215

Energy Rating: Tbc. We aim to make our particulars both accurate and reliable. However they are not guaranteed; nor do they form part of an offer or contract. If you require clarification on any points then please contact us, especially if you're traveling some distance to view. Please note that appliances and heating systems have not been tested and therefore no warranties can be given as to their good working order.

 **RICS** | Regulated  
Estate Agent  
and Letting Agent

[dexters.co.uk](http://dexters.co.uk)