



Trafalgar Road, SE10

£450,000

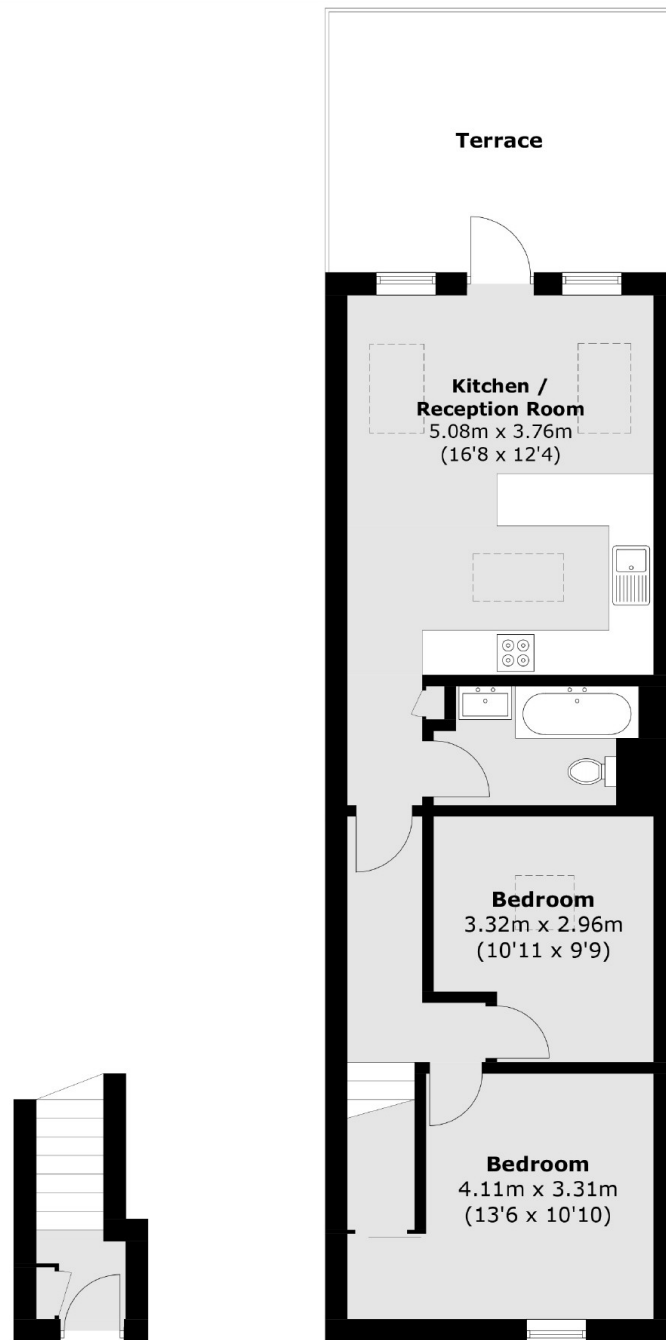
A unique two double bedroom Victorian conversion in a sought after location which has been finished to a high standard, Benefiting from a private rear roof terrace and it's own front door.

Trafalgar road is ideally situated close to many local amenities in the historic centre of Greenwich with Greenwich Park moments away. Public transport links include Cutty Sark DLR Station and Maze Hill National Rail Station.

Features

- Newly Renovated
- Private Roof Terrace
- Two Double Bedrooms
- Sought After Location
- Period Conversion
- Own Front Door

Trafalgar Road,
London, SE10



Ground Floor

First Floor

Total area (approx.): 59.7 sq. m (642.6 sq. ft)
Terrace : 16.1 sq. m (173.3 sq. ft)

Dexters

Greenwich
275 Greenwich High Road
Greenwich
London
Sales
020 8815 2215

Energy Rating: C. We aim to make our particulars both accurate and reliable. However they are not guaranteed; nor do they form part of an offer or contract. If you require clarification on any points then please contact us, especially if you're traveling some distance to view. Please note that appliances and heating systems have not been tested and therefore no warranties can be given as to their good working order.

 **RICS** | Regulated
Estate Agent
and Letting Agent

[dexters.co.uk](https://www.dexters.co.uk)