



Colomb Street, SE10

£780,000

A beautifully presented two bedroom period home with a modern interior, located on a quiet road moments from Maze Hill Station. Presented in immaculate condition, the property benefits from a larger than average garden and is finished to a high standard.

Colomb Street is a quiet residential street located a short walk from Maze Hill Mainline Station providing direct links to London Bridge, Cannon Street and St Pancras. Greenwich Park is located nearby as are the many historical attractions of Greenwich including the National Maritime Museum, Royal Observatory and the Royal Naval College. There are an array of local shops, restaurants and cafés along Trafalgar Road for residents

Features

O.I.E.O
Sought After Location
No Work Required
Two Bedrooms
Immaculate Throughout
Modern

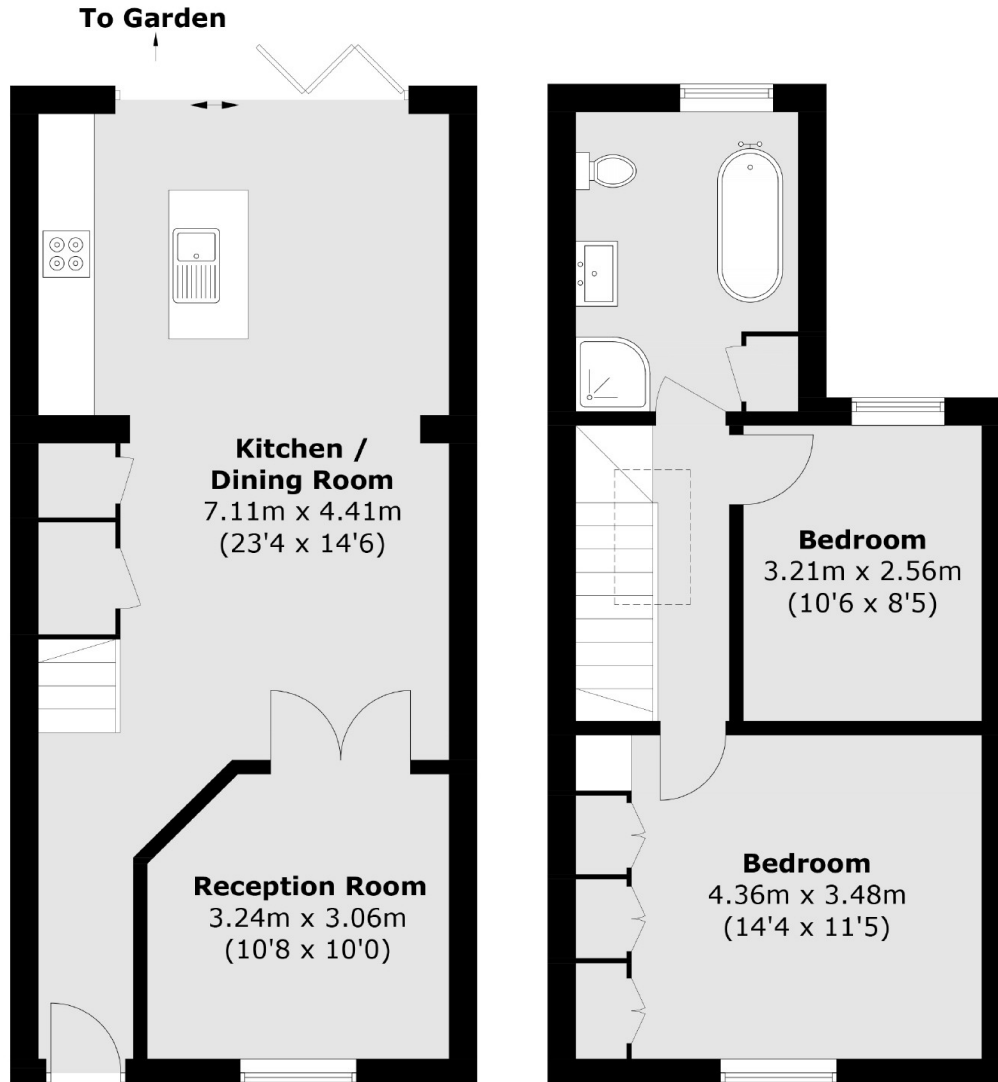


Colomb Street, SE10

The ground floor offers a spacious open-plan living, kitchen, and dining area with patio doors that open onto a beautifully mature garden, perfect for indoor-outdoor living. Additionally, there is a cosy snug reception room. Upstairs, you'll find two generously sized double bedrooms and a contemporary family bathroom, providing ample comfort and style.



Colomb Street,
London, SE10



Total area (approx.): 83.1 sq. m (894.5 sq. ft)