



## Hyde Vale, SE10

£2,500,000

A stunning four bedroom Grade II-listed Georgian semi detached family home positioned on arguably West Greenwich's most desirable road. The property is finished to a good standard and retains all period features throughout and further benefits from being offered to the market chain free.

Hyde Vale is a popular street in West Greenwich within easy reach of all of Greenwich's shops, bars and restaurants as well as the historical places of interest such as the National Maritime Museum, Royal Observatory and the Royal Naval College. It's a short walk from both Cutty Sark and Greenwich DLR stations as well as the Mainline Rail Station at Greenwich giving fast and convenient access into Canary Wharf and the City.

### Features

- Chain Free
- Sought After Location
- Period Features Throughout
- Good Size Garden
- Four Bedrooms
- Wine Cellar
- Utility Space



## Hyde Vale, SE10

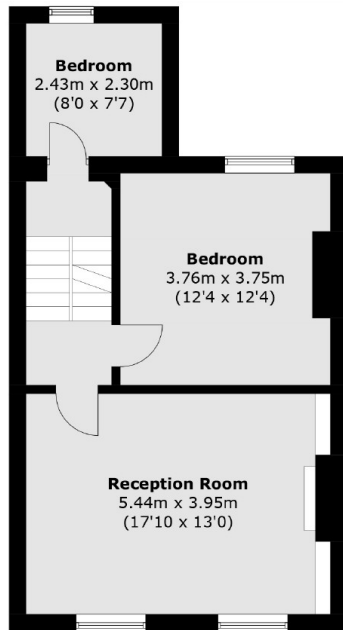
Upon entering the ground floor, you are welcomed by a cloakroom that leads into a spacious hallway. Off the hallway, you'll find a charming reception room filled with period features, as well as a second reception room, currently used as a study. This level also includes a convenient shower room and W.C.

The lower ground floor boasts a large kitchen and dining area, complete with patio doors that open onto a beautifully mature garden. This floor also offers a utility space and a wine cellar, perfect for additional storage and entertaining.

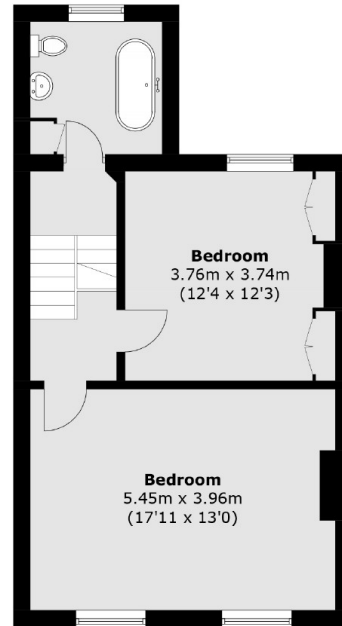
On the first floor, there are three well-proportioned bedrooms, while the second floor features two additional bedrooms and a family bathroom, offering ample space for a growing family.



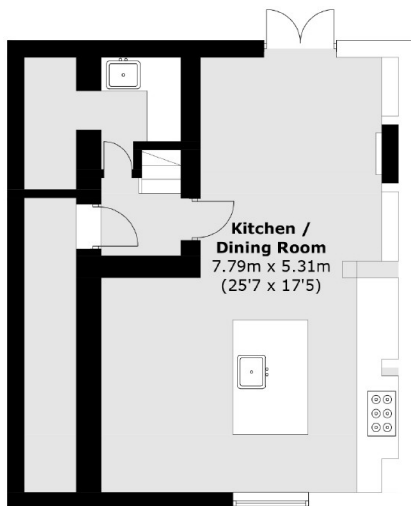
# Hyde Vale, London, SE10



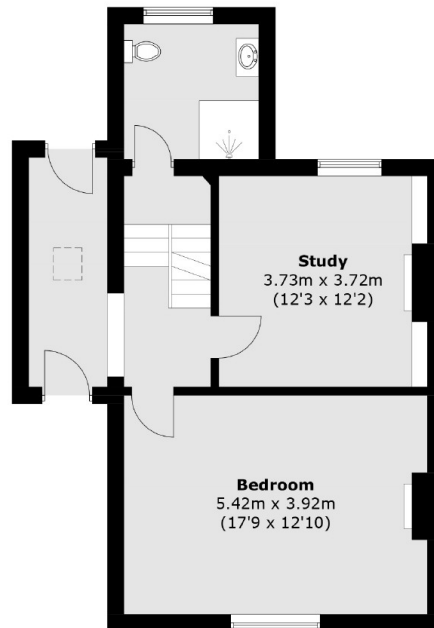
**First Floor**



**Second Floor**



**Lower Ground Floor**



**Ground Floor**

Total area (approx.): 207.3 sq. m (2,231.3 sq. ft)