



## Cutter Lane, SE10

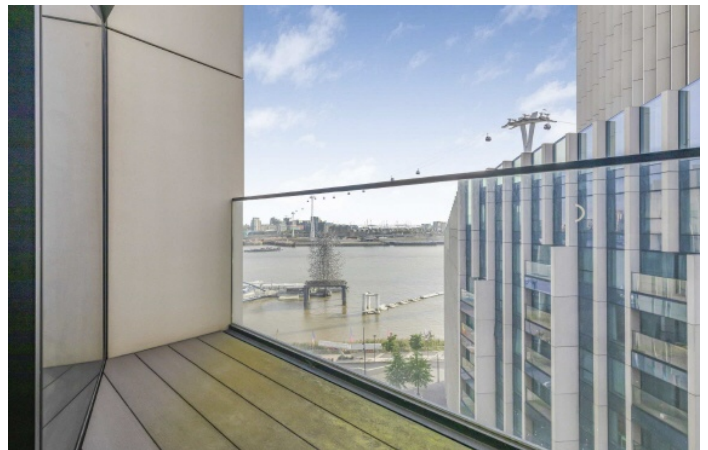
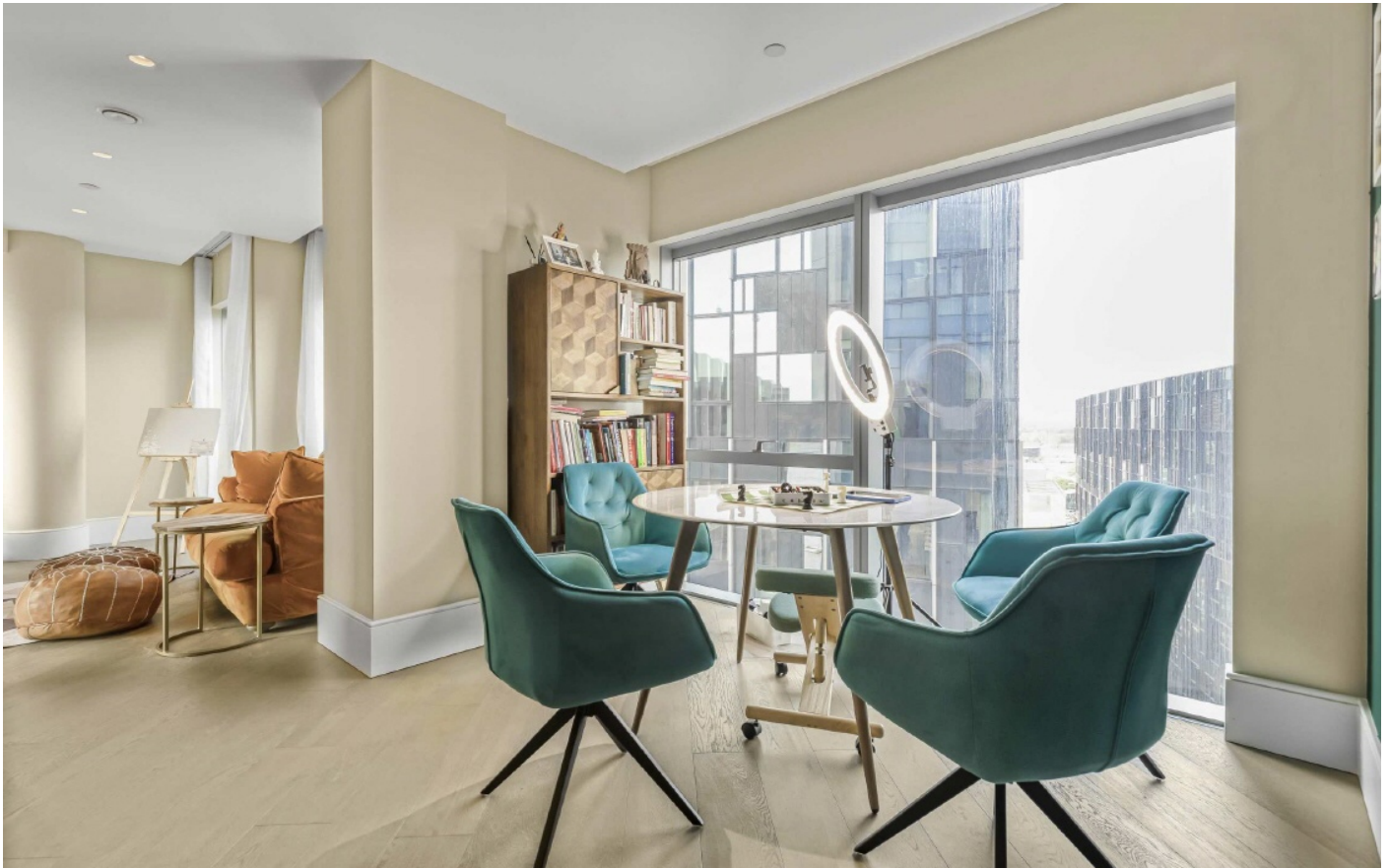
£1,000,000

A luxurious two double bedrooms two bathrooms apartment with a private terrace and amazing views across the River Thames. The prestigious building is designed by Design Haus Liberty, the interiors have been inspired by Greenwich Peninsula's unique water-flanked position on the Thames, overlooked from the private terrace. This property further benefits from being just over 1,000 sq ft

Located a short walk from North Greenwich bus and tube station, adjacent to the IFS Cloud Cable Car and opposite North Greenwich Pier, transport links are readily available.

### Features

- Amazing River Views
- Access to Five Residents Roof Terraces
- 24 Hour Concierge
- Private Terrace
- Two Double Bedrooms
- Sought After Location



## Cutter Lane, SE10

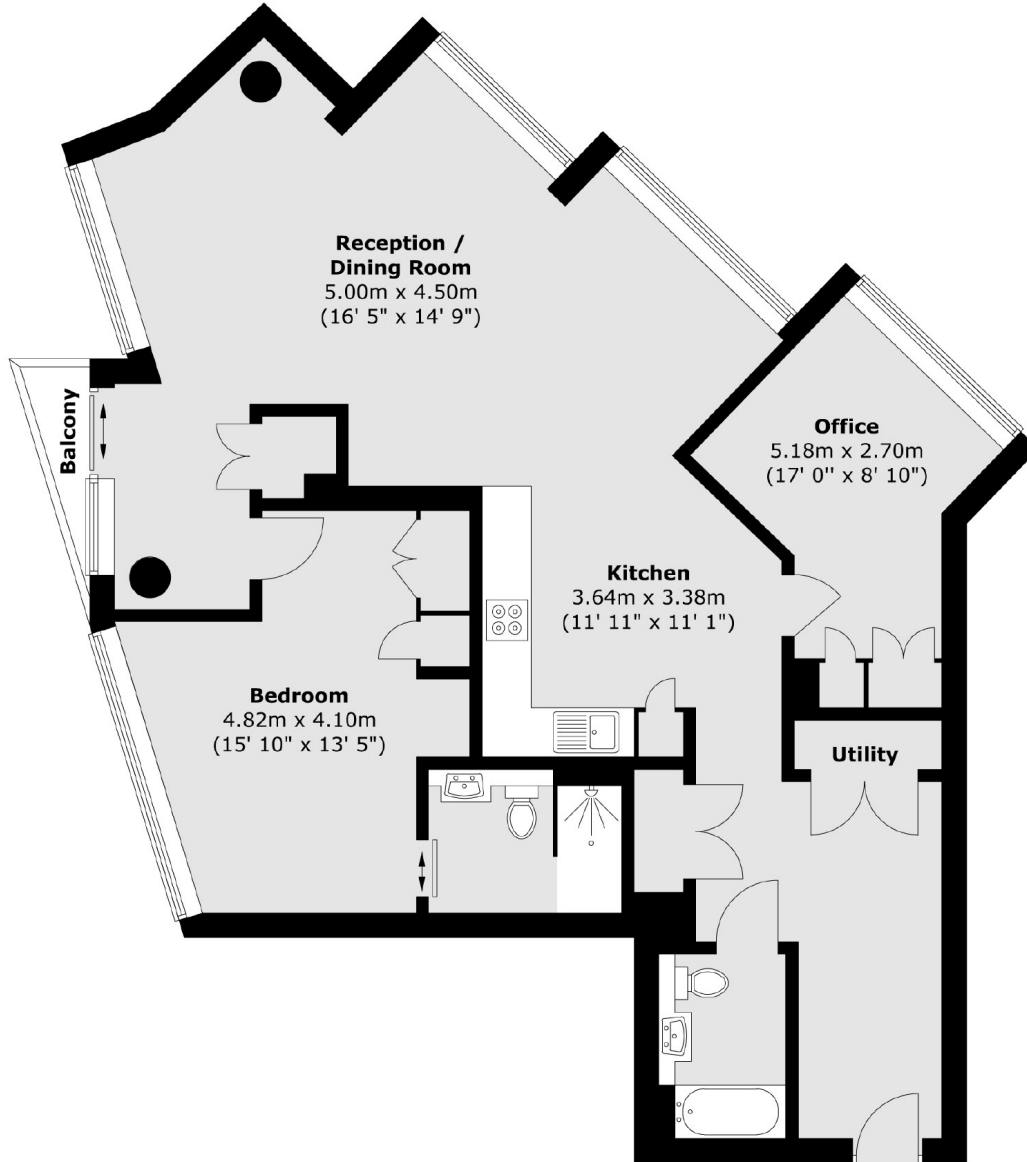
This stunning apartment also offers comfort cooling and access to the Renew Floor, which includes a gym, steam room, and a pool with city views. Additionally, residents can enjoy amenities such as a cinema room, boardroom, and several terraces throughout the entire Upper Riverside development.





Cutter Lane,  
London, SE10

**Ninth Floor**



Total area (approx.) : 97.7 sq. m (1052 sq. ft)  
Total balcony area (approx.) : 4.5 sq. m (48 sq. ft)