



## Glaiser Street, SE8

£475,000

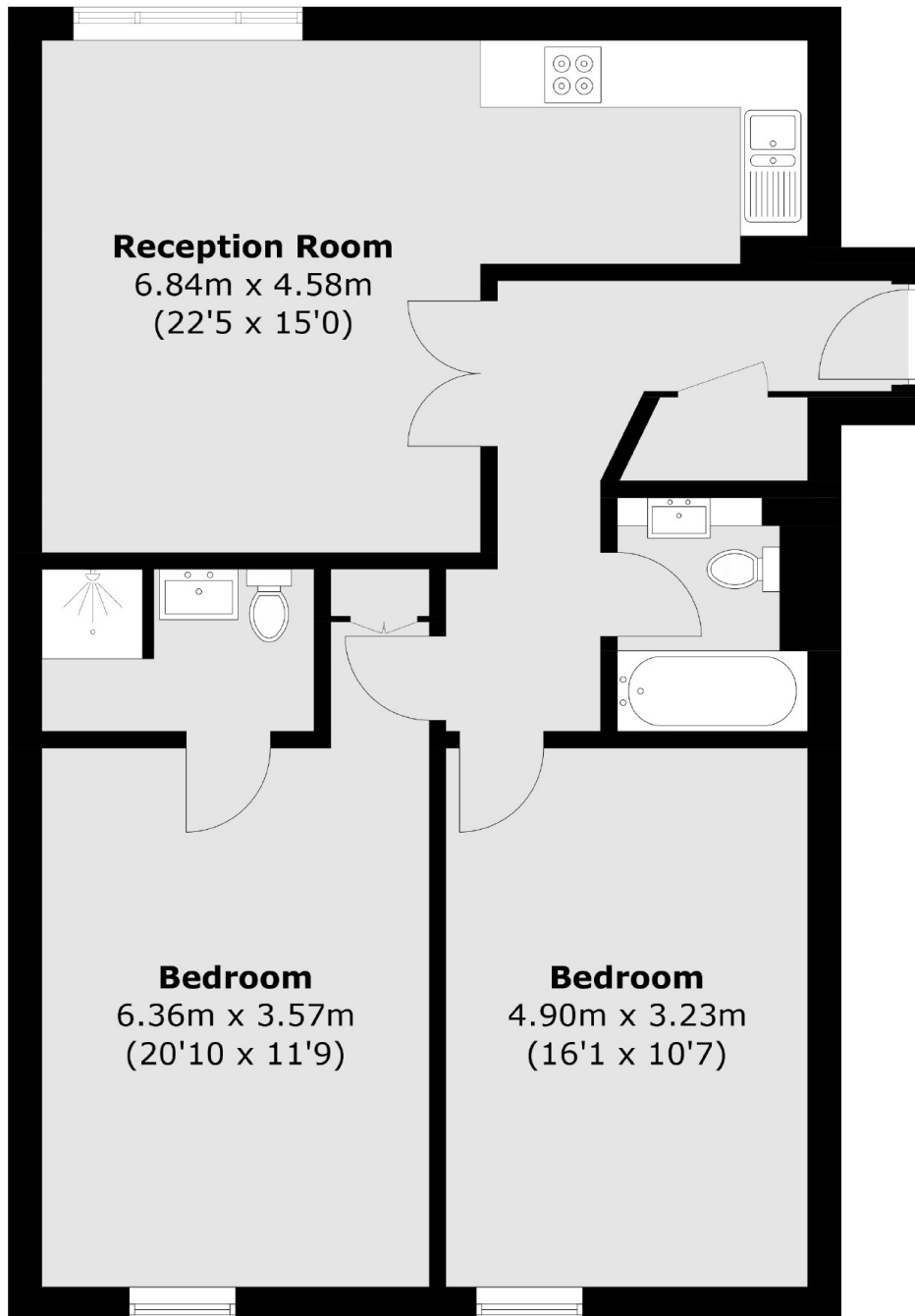
A two bedroom, two bathroom modern apartment which is situated in a sought after location. And is offered to the market chain free which further benefits from direct city views from the reception room.

Excellently located just minutes away from Greenwich DLR and overground stations that take you into London Bridge, Cannon Street and Canary Wharf in a matter of minutes. There are also plenty of restaurants, bars and shops located a short walk away along the river. Situated on the Thames river path, taking you through Greenwich past the Cutty Sark and onto the o2 .

### Features

- Two Bedrooms
- Chain Free
- City Views
- Sought After Location
- Ideal First Purchase
- Modern Flat

Glaisher Street,  
London, SE8



Total area (approx.): 77.1 sq. m (829.9 sq. ft)