



## Telegraph Avenue, SE10

£646 Per week

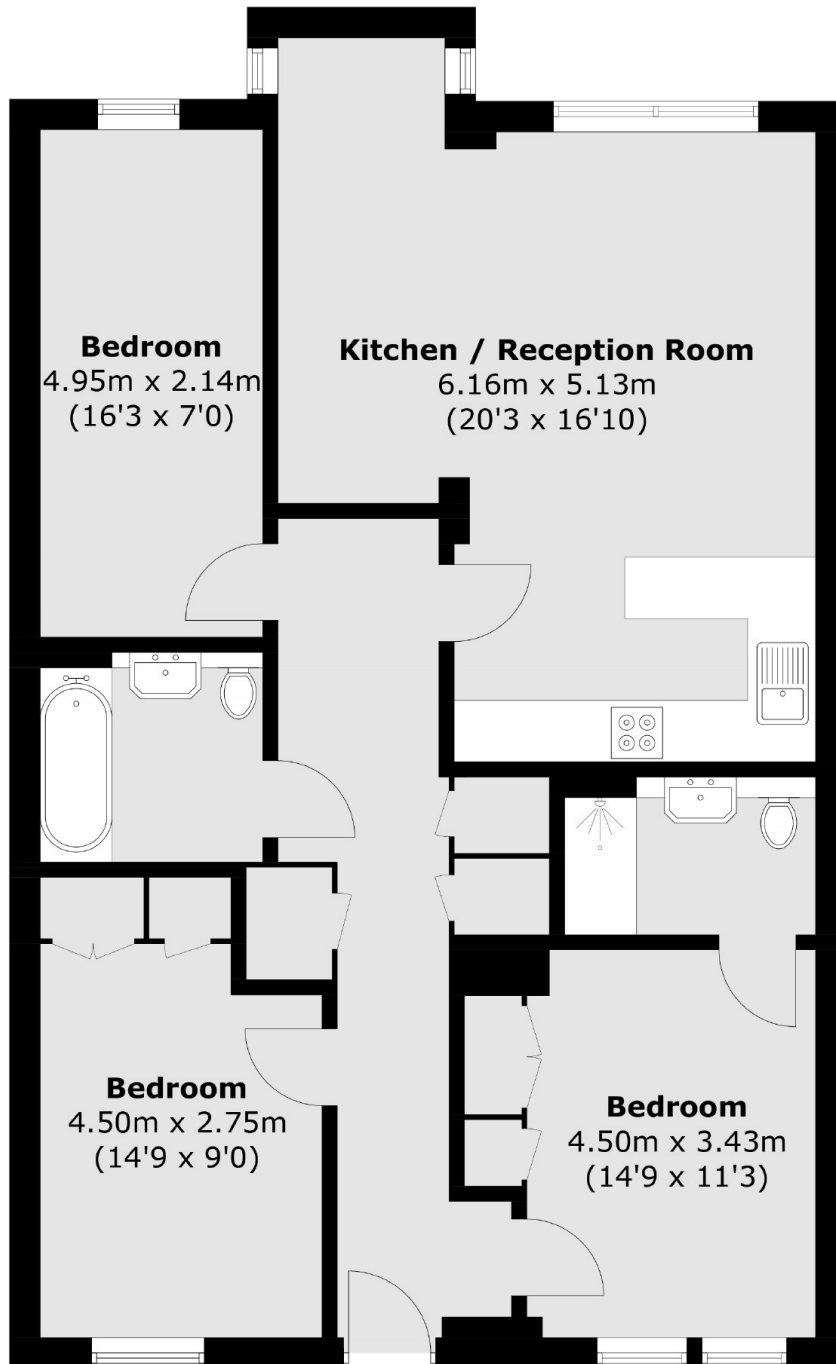
Three bedroom two bathroom apartment located in the popular Enderby Wharf development. Features large open plan living area, private front terrace and on site residents GYM and 24hr Concierge.

This apartment is ideally located for the commuter, situated between a choice of three stations, which include North Greenwich (Jubilee), Maze Hill & Westcombe Park (Overground), with a large selection of (A) roads close by, making Central London and beyond easily accessible. The picturesque riverside location makes the walk into Greenwich town centre extremely enjoyable, whilst you are just a short distance from the beautiful open spaces of Greenwich Park.

### Features

Three Bedrooms  
Two Bathrooms  
Open Plan Living  
Residents GYM  
24hr Concierge

Telegraph Avenue,  
London, SE10



Total area (approx.): 90.9 sq. m (978.4 sq. ft)