



Banning Street, SE10

£750,000

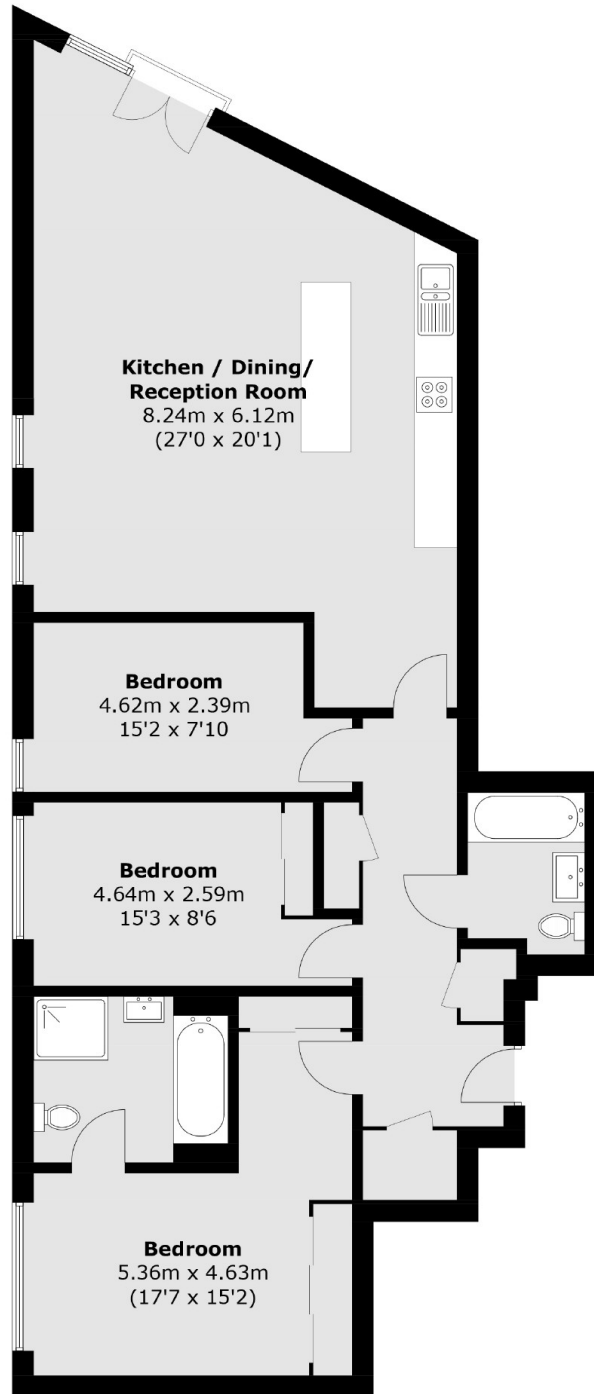
A beautifully presented three bedroom, two bathroom apartment with amazing river & city views. The development offers a 24 hour concierge and also access to private leisure facilities, which include a swimming pool, gymnasium, tennis court and gardens within the grounds.

Henry Hudson Apartment development is located on the banks of the Thames and has a fantastic community feel with the beautiful Greenwich Park, Thames Pathway, University of Greenwich, the Old Naval College, National Maritime Museum, Royal Observatory, listed buildings and pubs of Greenwich town, and Greenwich Market. Maze Hill Rail Station is a short walk away and allows for a 13-15 minute journey into London Bridge station, the Cutty Sark DLR provides a direct link to Canary Wharf (Jubilee and Elizabeth Line) and Bank, while the North Greenwich Jubilee line and O2 Arena are easily accessible.

Features

- Three Bedrooms
- Two Bathrooms
- Private Gym
- Tennis Courts
- Residents Swimming Pool
- Amazing City & River Views

Banning Street,
London, SE10



Total area (approx.): 107.2 sq. m (1,153.9 sq. ft)

Dexters

Greenwich
275 Greenwich High Road
Greenwich
London
Sales
020 8815 2215

Energy Rating: B. We aim to make our particulars both accurate and reliable. However they are not guaranteed; nor do they form part of an offer or contract. If you require clarification on any points then please contact us, especially if you're traveling some distance to view. Please note that appliances and heating systems have not been tested and therefore no warranties can be given as to their good working order.

 **RICS** | Regulated
Estate Agent
and Letting Agent

dexters.co.uk