



## Mumfords Mill, SE10

£685,000

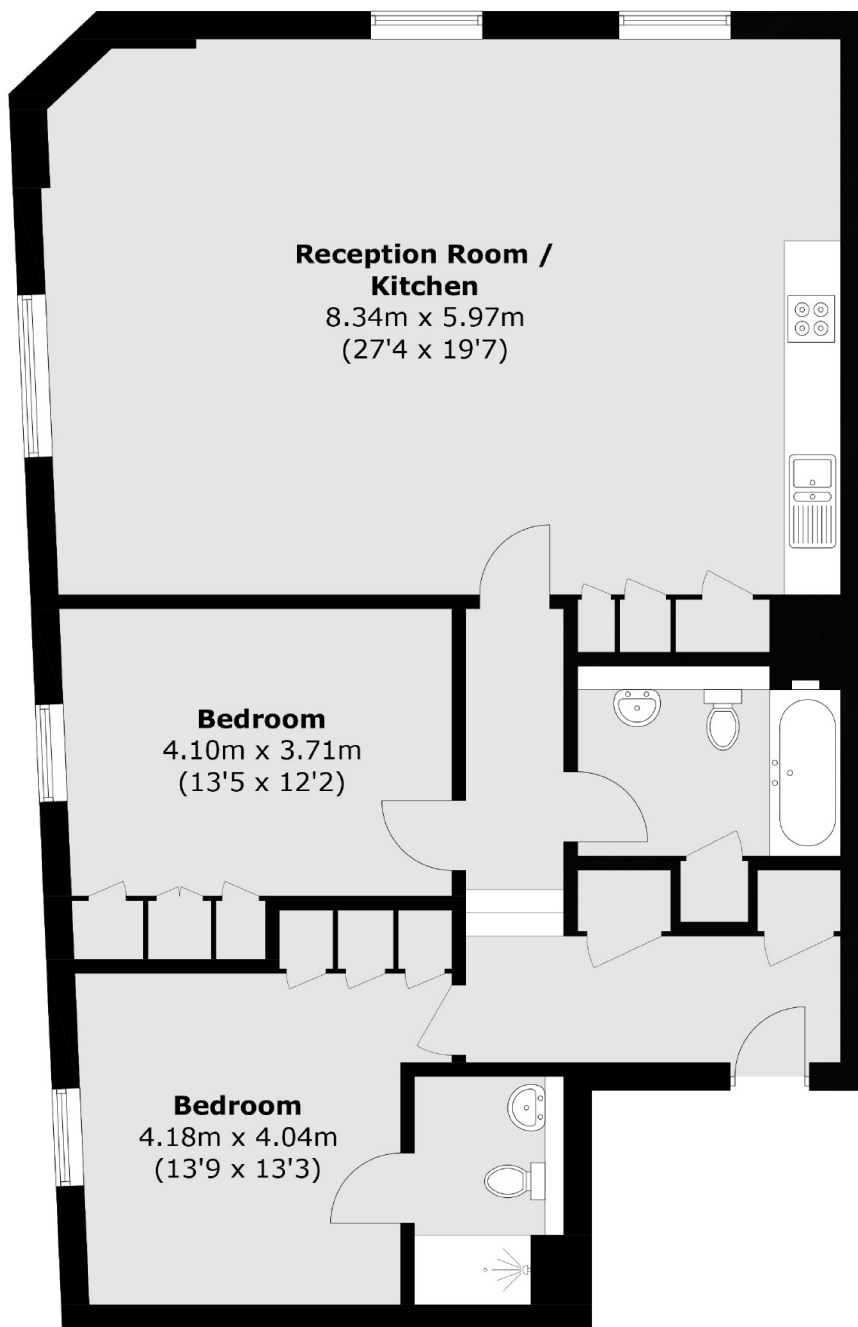
A charming two bedroom two bathroom split level period conversion flat in a sought after location which benefits from amazing city views. The property further benefits from being offered to the market chain free.

Mumfords Mill is conveniently located in Greenwich High Road for all the attractions Royal Greenwich has to offer, moments from both the DLR at Deptford Bridge as well as the DLR and mainline at Greenwich station; giving fast and easy access into both Canary Wharf and the City.

### Features

- Two Bedrooms
- Two Bathrooms
- Extra High Ceilings
- Split Level
- City Views
- Period Conversion

# Mumfords Mill, London, SE10



Total area (approx.): 105.8 sq. m (1,138.8 sq. ft)