



## Roan Street, SE10

£395,000

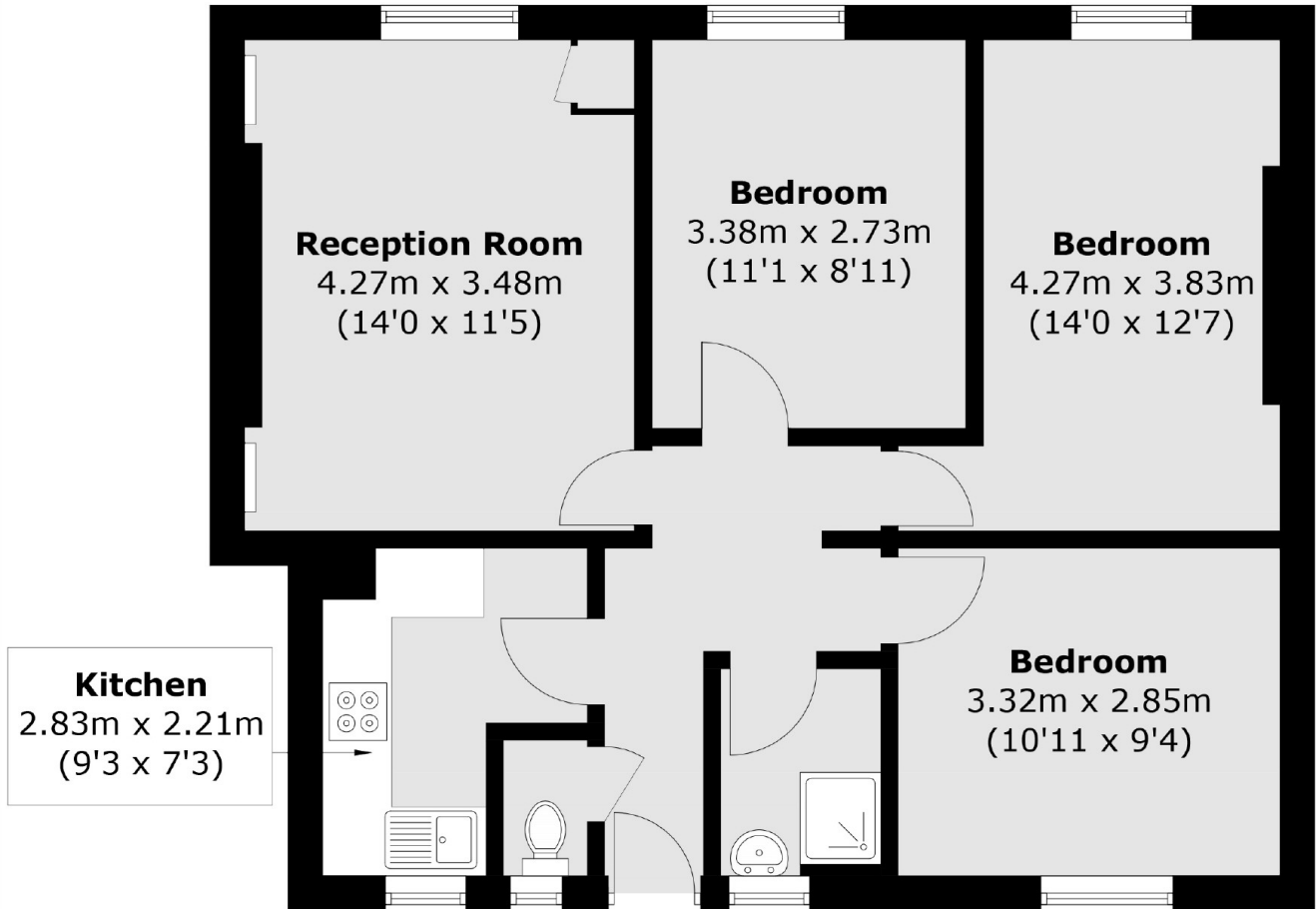
A three bedroom top floor flat with a lift, Situated in a sought after location. This property would make an ideal first purchase or even BTL investment.

Located in the heart of Greenwich for independent shops, bars and restaurants, Greenwich Mainline and DLR Station is a short walk away providing direct connections to Canary Wharf, Bank, London Bridge, Cannon Street and Kings Cross. While the Greenwich Park and Greenwich Market are both within easy reach.

### Features

- Three Bedrooms
- Sought After Location
- Top Floor With A Lift
- Ideal First Purchase
- Purpose Built
- Long Lease

Roan Street,  
London, SE10



Total area (approx.): 63.5 sq. m (683.5 sq. ft)