



Royal Place, SE10

£2,100,000

A smart and modern four bedroom, four bathroom family home on one of the most prime streets in West Greenwich which has been finished a high standard. This beautifully presented house offers flexible accommodation throughout.

Royal Place is a prime road located in West Greenwich moments from Greenwich station and DLR as well as all the amenities on offer from independent shops and bars, to large chain brands all located within a short walk away. Royal Greenwich Park is just a 5 minute walk away.

Features

- Immaculate Throughout
- Sought After Location
- Two Private Parking Spaces
- Four Bedrooms
- Four Bathrooms
- Conservatory



Royal Place, SE10

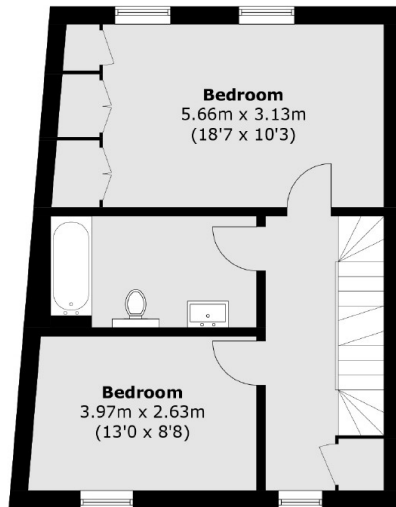
Built and designed to the highest standards, this exceptional contemporary home is presented in immaculate condition, offering in excess of 2100sq ft with four bedrooms, two large and light reception spaces, a substantial kitchen/diner, private garden and conservatory/ reading room

Combined with a generous reception space, the room offers an incredibly spacious and sophisticated area that is perfect for both relaxing and entertaining.

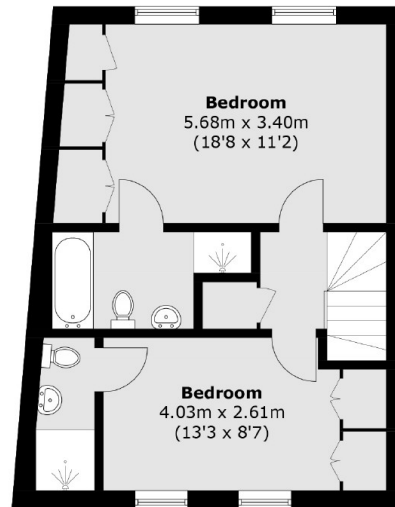
Upstairs, the first floor is home to two large double bedrooms with a separate guest bathroom containing a bath with shower over. On the top floor can be found the two further bedrooms, both with an en- suite.



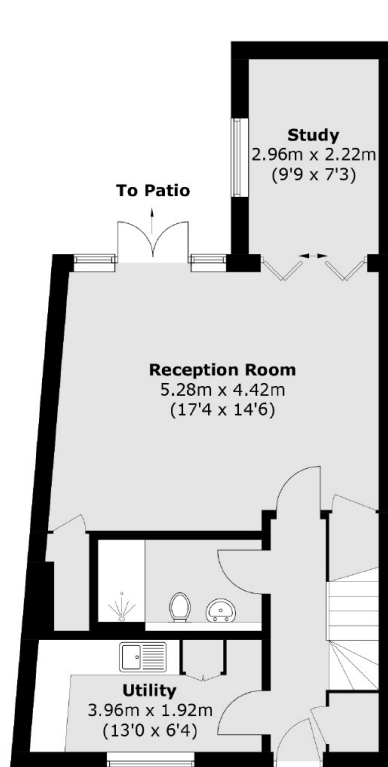
Royal Place, London, SE10



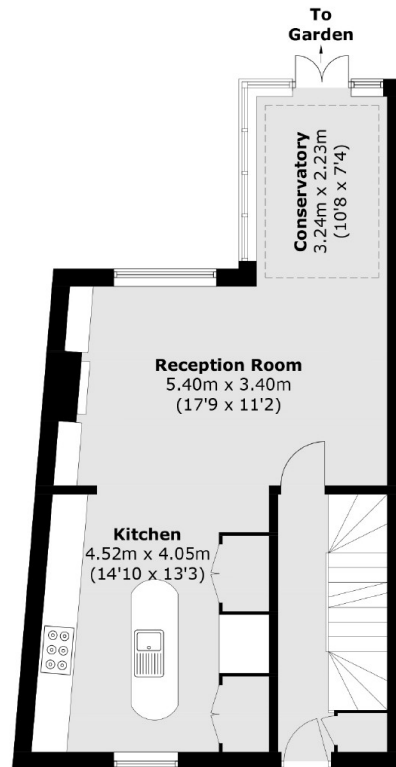
First Floor



Second Floor



Lower Ground Floor



Ground Floor

Total area (approx.): 198.7 sq. m (2,138.7 sq. ft)